

Date : 2024-07-23

CERTIFICATE OF ANALYSIS - GC PROFILING

SAMPLE IDENTIFICATION

Internal code : 24G10-PTH03

Customer Identification : Organic Lemongrass - India - L90114R

Type : Essential Oil

Source : *Cymbopogon flexuosus*

Customer : Plant Therapy

Checked and approved by:

Alexis St-Gelais, Ph. D., Chimiste 2013-174

Notes: This report may not be published, including online, without the written consent from Laboratoire PhytoChemia. This report is digitally signed, it is only considered valid if the digital signature is intact. The results only describe the samples that were submitted to the assays.

GAS CHROMATOGRAPHIC ANALYSIS

Method : PC-MAT-014 - Analysis of the composition of an essential oil or other volatile liquide by FAST GC-FID

✖ISO

Results : See analysis summary (next page)

Analyst : Sylvain Mercier, M. Sc., Chimiste 2014-005

Date : 2024-07-18

PHYSICOCHEMICAL DATA

Refractive index : 1.4858 ± 0.0003 (20 °C)

Method : PC-MAT-016 - Measure of the refractive index of a liquid.

Analyst : Cindy Caron B. Sc.

Date : 2024-07-11

CONCLUSION

No adulterant, contaminant or diluent has been detected using this method.

ANALYSIS SUMMARY - CONSOLIDATED CONTENTS

New readers of similar reports are encouraged to read table footnotes at least once.

Identification	%	Class
Ethanol	0.01	Aliphatic alcohol
Isobutyral	tr	Aliphatic aldehyde
2-Methyl-3-buten-2-ol	0.04	Aliphatic alcohol
Isovaleral	0.01	Aliphatic aldehyde
2-Methylbutyral	0.01	Aliphatic aldehyde
2-Ethylfuran	tr	Furan
Isoamyl alcohol	0.01	Aliphatic alcohol
Hexanal	0.01	Aliphatic aldehyde
Unknown	0.01	Unknown
(3Z)-Hexenol	0.01	Aliphatic alcohol
4-Heptanone	0.02	Aliphatic ketone
Hexanol	0.01	Aliphatic alcohol
Unknown	0.01	Unknown
Tricyclene	0.24	Monoterpene
α -Pinene	0.33	Monoterpene
Camphene	1.80	Monoterpene
Benzaldehyde	0.01	Simple phenolic
Cymene isomer?	tr	Monoterpene
β -Pinene	0.02	Monoterpene
Sabinene	0.02	Monoterpene
Dehydro-1,8-cineole	0.12	Monoterpenic ether
6-Methyl-5-hepten-2-one	1.78	Aliphatic ketone
Myrcene	0.09	Monoterpene
6-Methyl-5-hepten-2-ol	0.06	Aliphatic alcohol
α -Phellandrene	0.01	Monoterpene
Octanal	0.07	Aliphatic aldehyde
α -Terpinene	0.01	Monoterpene
<i>para</i> -Cymene	0.03	Monoterpene
1,8-Cineole	0.06	Monoterpenic ether
Limonene	0.44	Monoterpene
Benzeneacetaldehyde	0.01	Simple phenolic
(Z)- β -Ocimene	0.30	Monoterpene
(E)- β -Ocimene	0.21	Monoterpene
2,6-Dimethyl-5-heptenal (melonal)	0.03	Aliphatic aldehyde
γ -Terpinene	0.02	Monoterpene
<i>cis</i> -Linalool oxide (fur.)	0.02	Monoterpenic alcohol
4-Nonanone	1.29	Aliphatic ketone
Octanol	0.03	Aliphatic alcohol
Camphenilone	0.01	Normonoterpenic ketone
<i>trans</i> -Linalool oxide (fur.)	0.01	Monoterpenic alcohol

Terpinolene	0.06	Monoterpene
4-Nonanol	0.02	Aliphatic alcohol
6,7-Epoxymyrcene	0.04	Monoterpenic ether
Rosefuran	0.21	Monoterpenic ether
Linalool	1.34	Monoterpenic alcohol
<i>cis</i> -Chrysanthemal?	0.03	Monoterpenic aldehyde
(<i>Z</i>)-6-Methyl-3,5-heptadien-2-one	0.04	Aliphatic ketone
<i>trans-para</i> -Mentha-2,8-dien-1-ol	0.05	Monoterpenic alcohol
Unknown	0.20	Unknown
Unknown	0.01	Unknown
<i>trans-para</i> -Menth-2-en-1-ol	0.01	Monoterpenic alcohol
<i>trans</i> -Chrysanthemal	0.19	Monoterpenic aldehyde
<i>exo</i> -Isocitral	0.21	Monoterpenic aldehyde
Citronellal	0.26	Monoterpenic aldehyde
Borneol	0.18	Monoterpenic alcohol
α -Phellandren-8-ol	0.12	Monoterpenic alcohol
Isoneral	0.37	Monoterpenic aldehyde
Rosefuran oxide	[0.15]	Monoterpenic ether
Unknown	0.24	Oxygenated monoterpene
Terpinen-4-ol	[0.15]	Monoterpenic alcohol
Unknown	0.11	Unknown
Isogeranial	0.62	Monoterpenic aldehyde
α -Terpineol	0.15	Monoterpenic alcohol
Myrtenal	0.04	Monoterpenic aldehyde
Unknown	0.10	Unknown
<i>trans</i> -Isopiperitenol	0.06	Monoterpenic alcohol
Unknown	0.11	Oxygenated monoterpene
Decanal	0.13	Aliphatic aldehyde
<i>cis</i> -Isopiperitenol	0.06	Monoterpenic alcohol
2,3-Epoxyneral?	0.04	Monoterpenic aldehyde
Nerol	0.12	Monoterpenic alcohol
Citronellol	0.14	Monoterpenic alcohol
Neral	29.02	Monoterpenic aldehyde
Piperitone	0.09	Monoterpenic ketone
Geraniol	4.94	Monoterpenic alcohol
Geranial	39.68	Monoterpenic aldehyde
Unknown	0.32	Oxygenated monoterpene
2-Undecanone	0.01	Aliphatic ketone
Geranyl formate	0.05	Monoterpenic ester
Methyl geranate	0.01	Monoterpenic ester
Unknown	0.04	Unknown
Neric acid	0.07	Monoterpenic acid
α -Cubebene	0.03	Sesquiterpene
Citronellyl acetate	0.06	Monoterpenic ester
Cyclosativene I	0.08	Sesquiterpene

Cyclosativene II	0.08	Sesquiterpene
Neryl acetate	0.02	Monoterpenic ester
Geranic acid	0.32	Aliphatic acid
α -Copaene	0.04	Sesquiterpene
β -Bourbonene	0.03	Sesquiterpene
β -Cubebene	0.08	Sesquiterpene
Geranyl acetate	3.76	Monoterpenic ester
β -Elemene	0.09	Sesquiterpene
Longifolene	0.01	Sesquiterpene
β -Caryophyllene	1.25	Sesquiterpene
β -Copaene	0.03	Sesquiterpene
<i>trans</i> - α -Bergamotene	0.02	Sesquiterpene
6,9-Guaiadiene	0.03	Sesquiterpene
<i>cis</i> - β -Bergamotene?	0.01	Sesquiterpene
(<i>E</i>)-Isoeugenol	0.33	Phenylpropanoid
α -Humulene	0.17	Sesquiterpene
<i>cis</i> -Muurolo-4(15),5-diene	0.04	Sesquiterpene
<i>trans</i> -Cadina-1(6),4-diene	0.05	Sesquiterpene
γ -Muurolole	0.01	Sesquiterpene
Germacrene D	0.13	Sesquiterpene
γ -Amorphene	0.03	Sesquiterpene
epi-Cubebol	0.07	Sesquiterpenic alcohol
α -Selinene	0.03	Sesquiterpene
Methyl (<i>E</i>)-isoeugenol	0.02	Phenylpropanoid
α -Muurolole	0.03	Sesquiterpene
ϵ -Amorphene	0.04	Sesquiterpene
γ -Cadinene	1.27	Sesquiterpene
Cubebol	0.13	Sesquiterpenic alcohol
δ -Cadinene	0.37	Sesquiterpene
10-epi-Cubebol?	0.04	Sesquiterpenic alcohol
(<i>E</i>)- γ -Bisabolene	0.18	Sesquiterpene
α -Cadinene	0.05	Sesquiterpene
Neryl butyrate	0.06	Monoterpenic ester
(<i>E</i>)- α -Bisabolene	0.01	Sesquiterpene
α -Elemol	0.05	Sesquiterpenic alcohol
Germacrene B	0.04	Sesquiterpene
Geranyl butyrate	0.11	Monoterpenic ester
Spathulenol	0.01	Sesquiterpenic alcohol
Caryophyllene oxide	0.54	Sesquiterpenic ether
Caryophyllene oxide isomer	0.02	Sesquiterpenic ether
Humulene epoxide II	0.05	Sesquiterpenic ether
Selin-6-en-4 α -ol isomer	0.04	Sesquiterpenic alcohol
1-epi-Cubenol	0.01	Sesquiterpenic alcohol
Cubenol	0.03	Sesquiterpenic alcohol
τ -Muurolol	0.02	Sesquiterpenic alcohol

β-Eudesmol	0.03	Sesquiterpenic alcohol
α-Eudesmol	0.01	Sesquiterpenic alcohol
Unknown	0.02	Oxygenated sesquiterpene
(2Z,6Z)-Farnesol	0.05	Sesquiterpenic alcohol
(2E,6Z)-Farnesol	0.01	Sesquiterpenic aldehyde
(2E,6E)-Farnesol	0.01	Sesquiterpenic aldehyde
Neophytadiene	0.03	Diterpene
Phytone	0.02	Terpenic ketone
Geranyl caprylate	0.02	Monoterpenic ester
meta-Camphorene	tr	Diterpene
Unknown	0.04	Unknown
Octadecanal	0.03	Aliphatic aldehyde
Unknown	0.06	Unknown
Unknown	0.19	Unknown
Unknown	0.28	Unknown
Unknown	0.13	Unknown
Unknown	0.02	Oxygenated diterpene
Phytol	0.05	Diterpenic alcohol
Benzyl (E)-isoeugenol	0.02	Phenolic ester
Unknown	0.41	Unknown
Phytol isomer I	0.02	Diterpenic alcohol
Unknown	0.02	Unknown
Unknown	0.01	Unknown
Unknown	0.05	Unknown
Consolidated total	98.23	

tr: The compound has been detected below 0.005% of the total signal

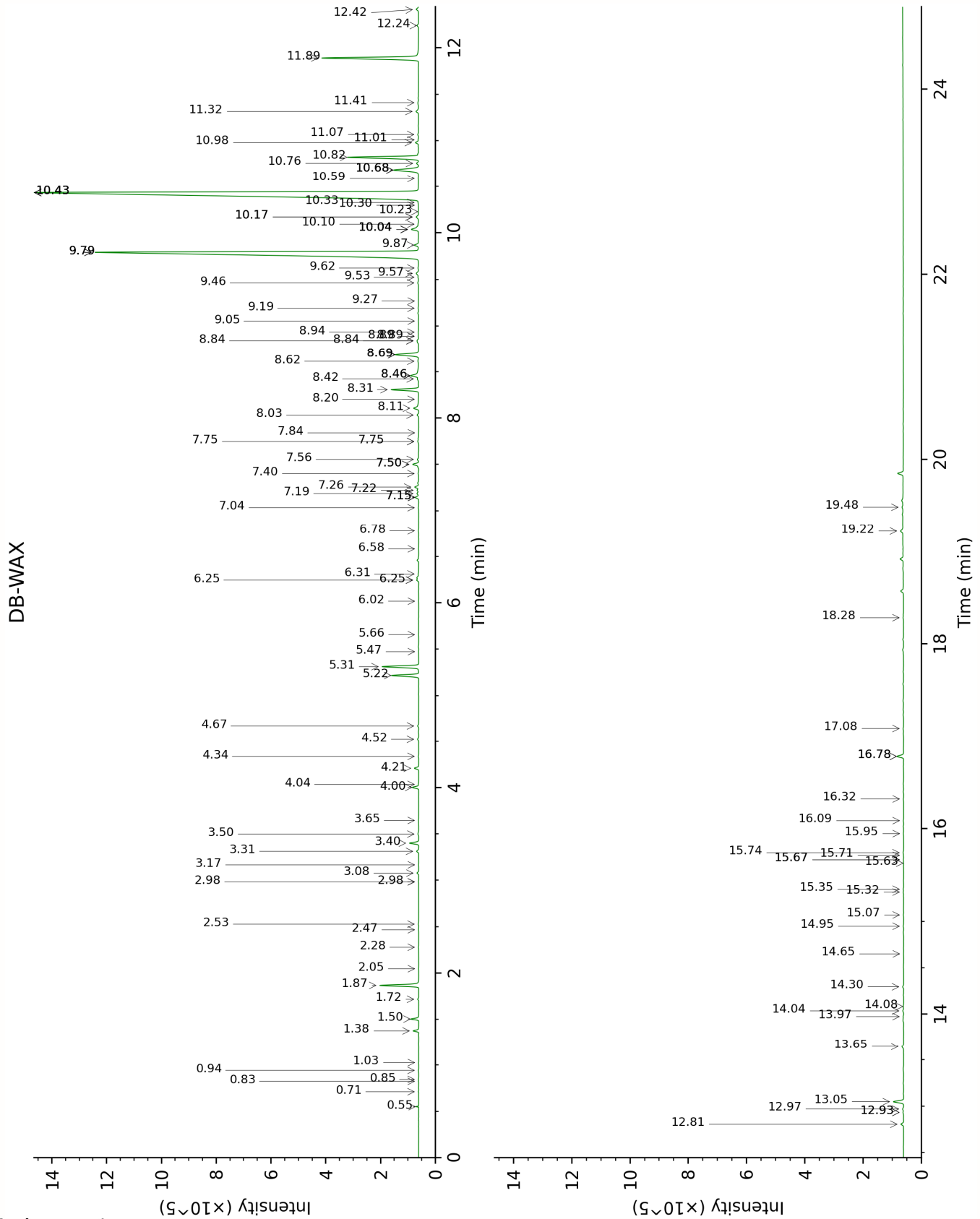
Note: no correction factor was applied

About "consolidated" data: The table above presents the breakdown of the sample volatile constituents after applying an algorithm to collapse data acquired from the multi-columns system of PhytoChemia into a single set of consolidated contents. In case of discrepancies between columns, the algorithm is set to prioritize data from the most standard DB-5 column, and smallest values so as to avoid overestimating individual content. This process is semi-automatic. Advanced users are invited to consult the "Full analysis data" table after the chromatograms in this report to access the full untreated data and perform their own calculations if needed.

Unknowns: Unknown compounds' mass spectral data is presented in the "Full analysis data" table. The occurrence of unknown compounds is to be expected in many samples, and does not denote particular problems unless noted otherwise in the conclusion.

Bracketed value ([xx]): A bracketed percent value indicate that two or more compound percentage could not be solved due to coelution.

This page was intentionally left blank. The following pages present the complete data of the analysis.



FULL ANALYSIS DATA

Ethanol	Column DB-WAX			Column DB-5		
	0.94	905.7	0.01	0.37	499.7	0.01
Isobutyral	0.55	775.5	0.04	0.44	537.3	tr
2-Methyl-3-buten-2-ol	1.72	1014.1	0.05	0.53	606.4	0.04
Isovaleral	0.85	886.6	0.01	0.63	641.7	0.01
2-Methylbutyral	0.83	879.4	0.01	0.66	651.8	0.01
2-Ethylfuran	1.03	918.8	0.01	0.81	702.6	tr
Isoamyl alcohol	3.65	1177.0	0.02	1.02	733.1	0.01
Hexanal	2.05	1045.6	tr	1.50	801.0	0.01
Unknown PEGR III [m/z 81, 69 (80), 41 (65), 83 (52), 109 (48), 55 (47)...]	0.71	840.4	0.01	1.76	823.8	0.01
(3Z)-Hexenol	6.02	1350.5	0.01	2.17	858.5	0.01
4-Heptanone	2.53	1091.4	0.03	2.33	871.3	0.02
Hexanol	5.66	1325.1	0.02	2.37	874.7	0.01
Unknown CULE I [m/z 69, 41 (57), 81 (57), 80 (18), 79 (18), 67 (17)...]				2.54	889.2	0.01
Tricyclene	1.38	973.0	0.24	2.95	919.4	0.24
α -Pinene	1.50	992.7	0.34	3.14	931.6	0.33
Camphene	1.87	1028.4	1.82	3.33	944.6	1.80
Benzaldehyde	7.56	1461.0	0.08	3.50	955.6	0.01
Cymene isomer?	2.98*	1126.9	[0.02]	3.69	968.2	tr
β -Pinene	2.28	1067.7	0.02	3.75*	972.4	[0.03]
Sabinene	2.47	1085.6	0.02	3.75*	972.4	[0.03]
Dehydro-1,8-cineole	3.31	1151.8	0.12	4.00*	988.5	[1.80]
6-Methyl-5-hepten-2-one	5.31	1300.8	1.78	4.00*	988.5	[1.80]
Myrcene	3.08	1134.0	0.08	4.08	993.9	0.09
6-Methyl-5-hepten-2-ol	7.15*	1431.1	[0.19]	4.13	997.3	0.06
α -Phellandrene	2.98*	1126.9	[0.02]	4.22	1003.1	0.01
Octanal	4.67	1249.7	0.06	4.24	1004.4	0.07
α -Terpinene	3.17	1140.8	0.01	4.41	1015.4	0.01
<i>para</i> -Cymene	4.34	1226.8	0.03	4.53	1023.0	0.03
1,8-Cineole	3.50	1165.9	0.06	4.60*	1027.5	[0.49]
Limonene	3.40	1158.5	0.44	4.60*	1027.5	[0.49]
Benzeneacetaldehyde	9.05	1573.8	0.03	4.79	1038.8	0.01
(Z)- β -Ocimene	4.00	1203.2	0.30	4.82	1041.1	0.30
(E)- β -Ocimene	4.21	1217.7	0.21	4.98	1050.9	0.21
2,6-Dimethyl-5-heptenal (melonal)	5.48	1312.2	0.01	5.03	1054.4	0.03

γ -Terpinene	4.04	1205.5	0.02	5.10	1058.3	0.02
<i>cis</i> -Linalool oxide (fur.)	6.78	1404.3	0.02	5.31	1071.9	0.02
4-Nonanone	5.22	1288.3	1.33	5.36	1074.8	1.29
Octanol	8.42	1525.7	0.08	5.40	1077.6	0.03
Camphenilone	6.58	1390.3	0.01	5.44	1080.1	0.01
<i>trans</i> -Linalool oxide (fur.)	7.15*	1431.1	[0.19]	5.56*	1087.2	[0.08]
Terpinolene	4.52	1239.7	0.06	5.56*	1087.2	[0.08]
4-Nonanol				5.64	1092.1	0.02
6,7-Epoxyterpinene	6.31	1371.2	0.03	5.68	1094.6	0.04
Rosefuran	6.25*†	1366.5	[0.10]	5.74	1098.5	0.21
Linalool	8.31	1516.9	1.34	5.82*	1103.6	[1.38]
<i>cis</i> -Chrysanthemal?	6.25*†	1366.5	[0.10]	5.82*	1103.6	[1.38]
(<i>Z</i>)-6-Methyl-3,5-heptadien-2-one	8.46*	1528.4	[0.66]	5.88	1107.6	0.04
<i>trans-para</i> -Mentha-2,8-dien-1-ol	9.19	1584.4	0.05	6.08	1120.1	0.05
Unknown CYFL III [m/z 81, 70 (98), 67 (63), 82 (53), 41 (46), 69 (46), 109 (43)...]	7.15*	1431.1	[0.19]	6.32	1135.5	0.20
Unknown CYFL IV [m/z 95, 67 (86), 41 (68), 82 (64), 123 (62)...]	7.84	1481.9	0.01	6.34	1137.1	0.01
<i>trans-para</i> -Menth-2-en-1-ol	9.27	1590.2	0.01	6.37	1138.9	0.01
<i>trans</i> -Chrysanthemal	7.50*	1457.1	[0.32]	6.49*	1146.5	[0.39]
<i>exo</i> -Isocitral	7.75*	1475.1	[0.06]	6.49*	1146.5	[0.39]
Citronellal	7.26	1439.2	0.21	6.61	1154.2	0.26
Borneol	10.04*	1651.6	[0.52]	6.76	1164.0	0.18
α -Phellandren-8-ol	10.43*	1683.2	[40.22]	6.80*	1166.0	[0.49]
Isoneral	8.11	1501.6	0.37	6.80*	1166.0	[0.49]
Rosefuran oxide	8.84*	1557.7	[0.15]	6.95*†	1175.7	[0.15]
Unknown CYFL V [m/z 84, 83 (74), 137 (56), 41 (47), 93 (43), 108 (40)... 152 (2)]	9.87	1638.1	0.24	6.98*†	1177.6	[0.20]
Terpinen-4-ol	8.84*	1557.7	[0.15]	6.98*†	1177.6	[0.20]
Unknown CYFL XIV [m/z 69, 41 (65), 109 (36), 67 (16), 84 (11), 43 (10), 55 (9)...]				7.08*	1184.1	[0.73]
Isogeranial	8.46*	1528.4	[0.66]	7.08*	1184.1	[0.73]

α -Terpineol	10.04*	1651.6	[0.52]	7.17*	1190.1	[0.18]
Myrtenal	8.94	1564.7	0.04	7.17*	1190.1	[0.18]
Unknown DRMO III [m/z 43, 81 (47), 67 (45), 69 944), 41 (42), 59 (40), 55 (39)...]	9.46	1605.7	0.08	7.22	1193.1	0.10
<i>trans</i> -Isopiperitenol	10.68*	1703.7	[1.71]	7.31	1199.0	0.06
Unknown CYFL VI [m/z 84, 41 (83), 83 (79), 91 (76), 93 (67), 119 (64), 137 (63), 109 (54), 108 (54)... 152 (4)]	10.43*	1683.2	[40.22]	7.40	1204.6	0.11
Decanal	7.50*	1457.1	[0.32]	7.44	1207.1	0.13
<i>cis</i> -Isopiperitenol	10.59	1695.7	0.03	7.59	1217.6	0.06
2,3-Epoxyneral?				7.69	1223.9	0.04
Nerol	11.32	1756.7	0.17	7.84	1233.9	0.12
Citronellol	10.98	1728.6	0.16	7.89	1237.4	0.14
Neral	9.79*	1631.9	[29.36]	8.01	1245.8	29.02
Piperitone	10.17*	1662.2	[0.16]	8.10	1251.6	0.09
Geraniol	11.89	1805.8	5.22	8.30	1265.1	4.94
Geranial	10.43*	1683.2	[40.22]	8.49	1277.8	39.68
Unknown CYFL VII [m/z 43, 69 (77), 41 (70), 109 (54)... 152 (6)]				8.57	1282.8	0.32
2-Undecanone	8.89*	1561.4	[0.03]	8.74	1294.4	0.01
Geranyl formate	10.17*	1662.2	[0.16]	8.89	1304.5	0.05
Methyl geranate	10.04*	1651.6	[0.52]	9.19	1326.0	0.01
Unknown CYFL VIII [m/z 82, 59 (44), 41 (43), 95 (31), 43 (29), 81 (24)...]	12.97	1900.8	0.05	9.36	1337.7	0.04
Neric acid				9.39	1340.1	0.07
α -Cubebene	7.04	1423.0	0.03	9.52	1348.8	0.03
Citronellyl acetate	9.79*	1631.9	[29.36]	9.64	1357.3	0.06
Cyclosativene I	7.19	1434.1	0.10	9.69	1361.1	0.08
Cyclosativene II	7.22	1436.7	0.08	9.73	1363.8	0.08
Neryl acetate	10.43*	1683.2	[40.22]	9.78	1367.3	0.02
Geranic acid	16.78*	2272.3	[0.36]	9.87*†	1373.4	[0.32]
α -Copaene	7.40	1449.9	0.04	9.87*†	1373.4	[0.32]
β -Bourbonene	7.75*	1475.1	[0.06]	9.98	1381.4	0.03
β -Cubebene	8.03	1496.0	0.08	10.07*	1387.5	[3.70]
Geranyl acetate	10.82	1715.3	3.76	10.07*	1387.5	[3.70]
β -Elemene	8.69*	1545.8	[1.35]	10.12	1391.0	0.09

Longifolene	8.20	1508.9	0.04	10.18	1395.8	0.01
β -Caryophyllene	8.69*	1545.8	[1.35]	10.45	1414.9	1.25
β -Copaene	8.62	1540.3	0.07	10.58	1425.2	0.03
<i>trans</i> - α -Bergamotene	8.69*	1545.8	[1.35]	10.68	1432.3	0.02
6,9-Guaiadiene	8.89*	1561.4	[0.03]	10.79	1440.5	0.03
<i>cis</i> - β -Bergamotene?				10.83	1443.2	0.01
(<i>E</i>)-Isoeugenol	16.78*	2272.3	[0.36]	10.90*	1448.8	[0.49]
α -Humulene	9.57	1613.8	0.17	10.90*	1448.8	[0.49]
<i>cis</i> -Muurolo-4(15),5-diene	9.62	1618.5	0.06	11.04	1458.9	0.04
<i>trans</i> -Cadin-1(6),4-diene	9.52	1610.6	0.05	11.19	1470.7	0.05
γ -Muurolole	9.79*	1631.9	[29.36]	11.24	1474.3	0.01
Germacrene D	10.04*	1651.6	[0.52]	11.28	1476.8	0.13
γ -Amorphene	10.10	1656.1	0.03	11.40	1486.4	0.03
epi-Cubebol	12.24	1836.5	0.07	11.48*	1492.1	[0.09]
α -Selinene	10.23	1666.8	0.03	11.48*	1492.1	[0.09]
Methyl (<i>E</i>)-isoeugenol	15.32	2123.2	0.02	11.54*	1496.5	[0.08]
α -Muurolole	10.33	1674.8	0.03	11.54*	1496.5	[0.08]
ϵ -Amorphene	10.30	1672.4	0.02	11.59	1499.9	0.04
γ -Cadinene	10.68*	1703.7	[1.71]	11.73*	1510.9	[1.41]
Cubebol	12.81	1885.9	0.13	11.73*	1510.9	[1.41]
δ -Cadinene	10.68*	1703.7	[1.71]	11.86	1521.4	0.37
10-epi-Cubebol?	14.04	1999.1	0.05	11.94	1527.8	0.04
(<i>E</i>)- γ -Bisabolene	10.76	1709.8	0.11	11.98	1530.8	0.18
α -Cadinene	11.07	1735.9	0.05	12.03*	1534.6	[0.11]
Neryl butyrate				12.03*	1534.6	[0.11]
(<i>E</i>)- α -Bisabolene	11.01	1731.1	0.03	12.14	1543.4	0.01
α -Elemol	14.30	2023.9	0.05	12.20	1547.9	0.05
Germacrene B	11.41	1764.7	0.07	12.24	1550.9	0.04
Geranyl butyrate	12.42	1851.8	0.14	12.39	1562.7	0.11
Spathulenol	14.65	2057.9	0.01	12.47	1568.7	0.01
Caryophyllene oxide	13.05	1908.1	0.54	12.56*	1575.8	[0.56]
Caryophyllene oxide isomer	12.93*	1897.5	[0.04]	12.56*	1575.8	[0.56]
Humulene epoxide II	13.65	1962.9	0.11	12.88	1601.7	0.05
Selin-6-en-4 α -ol isomer	15.07	2098.6	0.02	13.00	1610.6	0.04
1-epi-Cubebol	14.08	2003.6	0.03	13.12	1620.8	0.01
Cubebol	13.98	1993.2	0.03	13.33*	1638.1	[0.05]
τ -Muurolol	15.35	2126.2	0.02	13.33*	1638.1	[0.05]
β -Eudesmol	15.71	2162.6	0.01	13.40	1644.4	0.03
α -Eudesmol	15.63	2154.2	0.01	13.45	1648.2	0.01
Unknown JUVI XVI [m/z 43, 81 (84), 41]	15.74	2165.4	0.03	13.49	1651.6	0.02

(64), 67 (62), 95 (58), 79 (58)... 204 (48), 220 (2)]						
(2Z,6Z)-Farnesol	16.32	2224.7	0.02	13.69	1668.2	0.05
(2E,6Z)-Farnesal	15.67*	2157.7	[0.02]	14.23	1713.3	0.01
(2E,6E)-Farnesal	16.09	2200.5	0.02	14.55	1740.8	0.01
Neophytadiene	12.93*	1897.5	[0.04]	15.71	1843.3	0.03
Phytone	14.95	2086.5	0.02	15.76	1847.5	0.02
Geranyl caprylate	15.95	2185.9	0.02	16.87*	1950.9	[0.02]
meta-Camphorene	15.67*	2157.7	[0.02]	16.87*	1950.9	[0.02]
Unknown LICU V [m/z 41, 69 (95), 109 (41), 95 (39), 55 (36), 121 (36)...]				17.37	1998.7	0.04
Octadecanal	17.08	2304.3	0.03	17.61	2021.8	0.03
Unknown LICU VI [m/z 69, 41 (90), 95 (49), 109 (43), 219 (43), 55 (30)...]				17.71	2031.6	0.06
Unknown LICU VII [m/z 69, 41 (94), 81 (42), 109 (39), 107 (33), 43 (31)...]				17.82	2042.7	0.19
Unknown CYFL IX [m/z 93, 69 (95), 135 (76), 107 (53), 41 (53), 109 (50)... 235 (10)...]				18.11	2072.2	0.28
Unknown DRMO VI [m/z 69, 41 (37), 81 (23), 95 (19), 109 (18)...]	19.22	2542.7	0.16	18.47	2108.1	0.13
Unknown ABBA XIII [m/z 191, 95 (32), 69 (26), 123 (26), 109 (24)...290 (9)]	18.28	2435.8	0.02	18.50*	2111.1	[0.08]
Phytol	19.48	2573.3	0.05	18.50*	2111.1	[0.08]
Benzyl (E)-isoeugenol				18.67	2127.9	0.02
Unknown LICU II [m/z 69, 41 (38), 151 (36), 123 (34), 82 (24), 43 (23), 109 (21)...]				18.73	2134.7	0.41
Phytol isomer I				18.79	2141.0	0.02
Unknown CYFL X [m/z 94, 43 (56), 123 (55), 69 (53), 95 (42),				19.59	2224.9	0.02

79 (39)...					
Unknown CYFL XI [m/z 93, 69 (79), 43 (70), 137 (53), 41 (41), 119 (37)... 289 (33)...]			19.71	2238.0	0.01
Unknown CYFL XII [m/z 123, 94 (100), 43 (86), 69 (75), 95 (47), 41 (47), 93 (45)...]			19.91	2258.6	0.05
Total reported		97.19%		97.97%	

*: Two or more compounds are coeluting on this column

[xx]: Duplicate percentage due to coelutions, only the first one is taken into account in the consolidated total

†: Peaks apexes were resolved, but peaks overlapped and were summed for analysis

tr: The compound has been detected below 0.005% of total signal.

Note: no correction factor was applied
 R.T.: Retention time (minutes)
 R.I.: Retention index