

Date : 2025-02-17

CERTIFICATE OF ANALYSIS - GC PROFILING

SAMPLE IDENTIFICATION

**Internal code :** 25B10-PTH01

**Customer Identification :** Org Frankincense Frereana - USA/Somalia - FE0111R

**Type :** Essential Oil

**Source :** *Boswellia frereana*

**Customer :** Plant Therapy

Checked and approved by:

---

Alexis St-Gelais, Ph. D., chimiste 2013-174

*Notes: This report may not be published, including online, without the written consent from Laboratoire PhytoChemia. This report is digitally signed, it is only considered valid if the digital signature is intact. The results only describe the samples that were submitted to the assays.*

This report is an update from the first version issued on 2025-02-11 to correct the customer identification.

## GAS CHROMATOGRAPHIC ANALYSIS

**Method :** PC-MAT-014 - Analysis of the composition of an essential oil or other volatile liquide by FAST GC-FID

**\*ISO**

**Results :** See analysis summary (next page)

**Analyst :** Sylvain Mercier, M. Sc., Chimiste 2014-005

**Date :** 2025-02-11

## PHYSICOCHEMICAL DATA

**Refractive index :**  $1.4688 \pm 0.0003$  (20 °C)

**Method :** PC-MAT-016 - Measure of the refractive index of a liquid.

**Analyst :** Cindy Caron B. Sc.

**Date :** 2025-02-10

## CONCLUSION

No adulterant, contaminant or diluent has been detected using this method.

## ANALYSIS SUMMARY - CONSOLIDATED CONTENTS

New readers of similar reports are encouraged to read table footnotes at least once.

Identification	%	Class
2-Methyl-3-buten-2-ol	0.01	Aliphatic alcohol
(E)-2-Methyl-1,3-pentadiene	0.01	Alkene
Isovaleral	tr	Aliphatic aldehyde
3-Methyl-2-butanone	0.02	Aliphatic ketone
Unknown	0.01	Unknown
4-Methyl-2-pentanone (Methyl isobutyl ketone)	0.01	Aliphatic ketone
Toluene	0.05	Simple phenolic
Hexadiene isomer?	0.01	Alkene
Unknown	0.01	Alkene
Unknown	0.04	Alkene
(Z)-Salvene	0.01	Normonoterpene
Unknown	0.04	Unknown
Unknown	0.01	Monoterpene
Unknown	0.02	Unknown
Hashishene	0.76	Monoterpene
Tricyclene	0.13	Monoterpene
$\alpha$ -Thujene	15.28	Monoterpene
$\alpha$ -Pinene	43.32	Monoterpene
Camphene	0.92	Monoterpene
$\alpha$ -Fenchene	0.01	Monoterpene
Unknown	1.57	Monoterpene
Thuja-2,4(10)-diene	0.68	Monoterpene
Unknown	0.01	Monoterpene
3,7,7-Trimethylcyclohepta-1,3,5-triene?	0.01	Monoterpene
Sabinene	3.39	Monoterpene
$\beta$ -Pinene	2.08	Monoterpene
Pseudolimonene isomer	0.02	Monoterpene
cis-Carane	0.01	Monoterpene
6-Methyl-5-hepten-2-one	0.09	Aliphatic ketone
Dehydro-1,8-cineole	0.11	Monoterpenic ether
Myrcene	1.69	Monoterpene
6-Methyl-5-hepten-2-ol	0.03	Aliphatic alcohol
$\alpha$ -Phellandrene	1.05	Monoterpene
Octanal	0.03	Aliphatic aldehyde
Pseudolimonene	0.12	Monoterpene
$\Delta^3$ -Carene	0.01	Monoterpene
Unknown	0.02	Monoterpene
ortho-Methylanisole	0.02	Simple phenolic
Unknown	0.03	Monoterpene

$\alpha$ -Terpinene	0.41	Monoterpene
Carvomenthene	0.01	Aliphatic alcohol
<i>meta</i> -Cymene	0.13	Monoterpene
<i>para</i> -Cymene	6.64	Monoterpene
Limonene	1.71	Monoterpene
Unknown	0.29	Unknown
$\beta$ -Phellandrene	0.73	Monoterpene
1,8-Cineole	1.30	Monoterpenic ether
<i>ortho</i> -Cymene	0.04	Monoterpene
( <i>Z</i> )- $\beta$ -Ocimene	0.01	Monoterpene
Unknown	0.13	Unknown
Unknown	0.01	Unknown
$\gamma$ -Terpinene	0.58	Monoterpene
<i>cis</i> -Sabinene hydrate	0.06	Monoterpenic alcohol
Unknown	0.06	Oxygenated monoterpene
<i>cis</i> -Linalool oxide (fur.)	0.03	Monoterpenic alcohol
Unknown	0.07	Oxygenated monoterpene
Terpinolene	0.15	Monoterpene
<i>para</i> -Cymenene	0.22	Monoterpene
$\alpha$ -Pinene oxide	0.01	Monoterpenic ether
Unknown	0.01	Unknown
<i>trans</i> -Sabinene hydrate	0.06	Monoterpenic alcohol
Perillene	0.02	Monoterpenic ether
Linalool	0.38	Monoterpenic alcohol
$\alpha$ -Thujone	0.05	Monoterpenic ketone
Verbenol analog?	0.03	Monoterpenic alcohol
Unknown	0.03	Oxygenated monoterpene
$\beta$ -Thujone	0.47	Monoterpenic ketone
Dehydrosabinaketone	0.05	Normonoterpenic ketone
<i>trans-para</i> -Mentha-2,8-dien-1-ol	0.09	Monoterpenic alcohol
<i>cis-para</i> -Menth-2-en-1-ol	0.10	Monoterpenic alcohol
$\alpha$ -Campholenal	0.28	Monoterpenic aldehyde
Unknown	0.22	Unknown
Unknown	0.03	Unknown
<i>trans</i> -Pinocarveol	0.69	Monoterpenic alcohol
<i>cis</i> -Verbenol	0.05	Monoterpenic alcohol
<i>trans</i> -Sabinol	0.35	Monoterpenic alcohol
<i>trans</i> -Verbenol	0.69	Monoterpenic alcohol
<i>meta</i> -Mentha-4,6-dien-8-ol	0.27	Monoterpenic alcohol
Sabinaketone	0.08	Normonoterpenic ketone
Unknown	0.09	Oxygenated monoterpene
Pinocarvone	0.27	Monoterpenic ketone
Borneol	0.05	Monoterpenic alcohol
Unknown	0.10	Oxygenated monoterpene
$\alpha$ -Phellandren-8-ol	0.70	Monoterpenic alcohol

<i>cis</i> -Sabinol	0.09	Monoterpenic alcohol
Umbellulone	0.31	Monoterpenic ketone
Terpinen-4-ol	3.31	Monoterpenic alcohol
Thuj-3-en-10-al	0.09	Monoterpenic aldehyde
Cryptone	0.06	Normonoterpenic ketone
<i>para</i> -Cymen-8-ol	0.20	Monoterpenic alcohol
$\alpha$ -Terpineol	0.85	Monoterpenic alcohol
Myrtenal	0.31	Monoterpenic aldehyde
Myrtenol	0.25	Monoterpenic alcohol
<i>cis</i> - $\alpha$ -Phellandrene epoxide (iPr vs Me)	0.25	Monoterpenic ether
Verbenone	0.58	Monoterpenic ketone
<i>trans</i> -Piperitol	0.09	Monoterpenic alcohol
<i>trans</i> -Carveol	0.20	Monoterpenic alcohol
<i>cis</i> -Carveol	0.02	Monoterpenic alcohol
Citronellol	0.04	Monoterpenic alcohol
Cuminal	0.08	Monoterpenic aldehyde
Carvone	0.05	Monoterpenic ketone
Carvotanacetone	0.07	Monoterpenic ketone
Unknown	0.01	Unknown
Unknown	0.06	Oxygenated monoterpene
Piperitone	0.06	Monoterpenic ketone
Unknown	0.02	Unknown
3,5-Dimethoxytoluene	0.03	Simple phenolic
Unknown	0.03	Unknown
Bornyl acetate	1.08	Monoterpenic ester
Cuminol	0.05	Monoterpenic alcohol
Thymol	0.06	Monoterpenic alcohol
Carvacrol	0.11	Monoterpenic alcohol
<i>exo</i> -2-Hydroxycineole acetate	0.02	Monoterpenic ester
$\alpha$ -Cubebene	0.01	Sesquiterpene
Citronellyl acetate	0.04	Monoterpenic ester
$\alpha$ -Copaene	0.06	Sesquiterpene
1,5-diepi- $\beta$ -Bourbonene	0.02	Sesquiterpene
$\beta$ -Bourbonene	0.13	Sesquiterpene
$\beta$ -Elemene	0.09	Sesquiterpene
$\beta$ -Caryophyllene	0.04	Sesquiterpene
$\beta$ -Copaene	0.02	Sesquiterpene
Isogermacrene D	0.02	Sesquiterpene
$\alpha$ -Humulene	0.01	Sesquiterpene
Germacrene D	0.02	Sesquiterpene
$\beta$ -Selinene	0.02	Sesquiterpene
$\delta$ -Cadinene	0.02	Sesquiterpene
Caryophyllene oxide	0.01	Sesquiterpenic ether
$\beta$ -Eudesmol	0.01	Sesquiterpenic alcohol
$\alpha$ -Phellandrene dimer I	0.02	Diterpene

α-Phellandrene dimer II	0.43	Diterpene
α-Phellandrene dimer III	0.07	Diterpene
α-Phellandrene dimer IV	0.06	Diterpene
α-Phellandrene dimer VI	0.02	Diterpene
α-Phellandrene dimer VII	0.01	Diterpene
α-Phellandrene dimer VIII	0.01	Diterpene
<b>Consolidated total</b>	<b>98.93</b>	

tr: The compound has been detected below 0.005% of the total signal

Note: no correction factor was applied

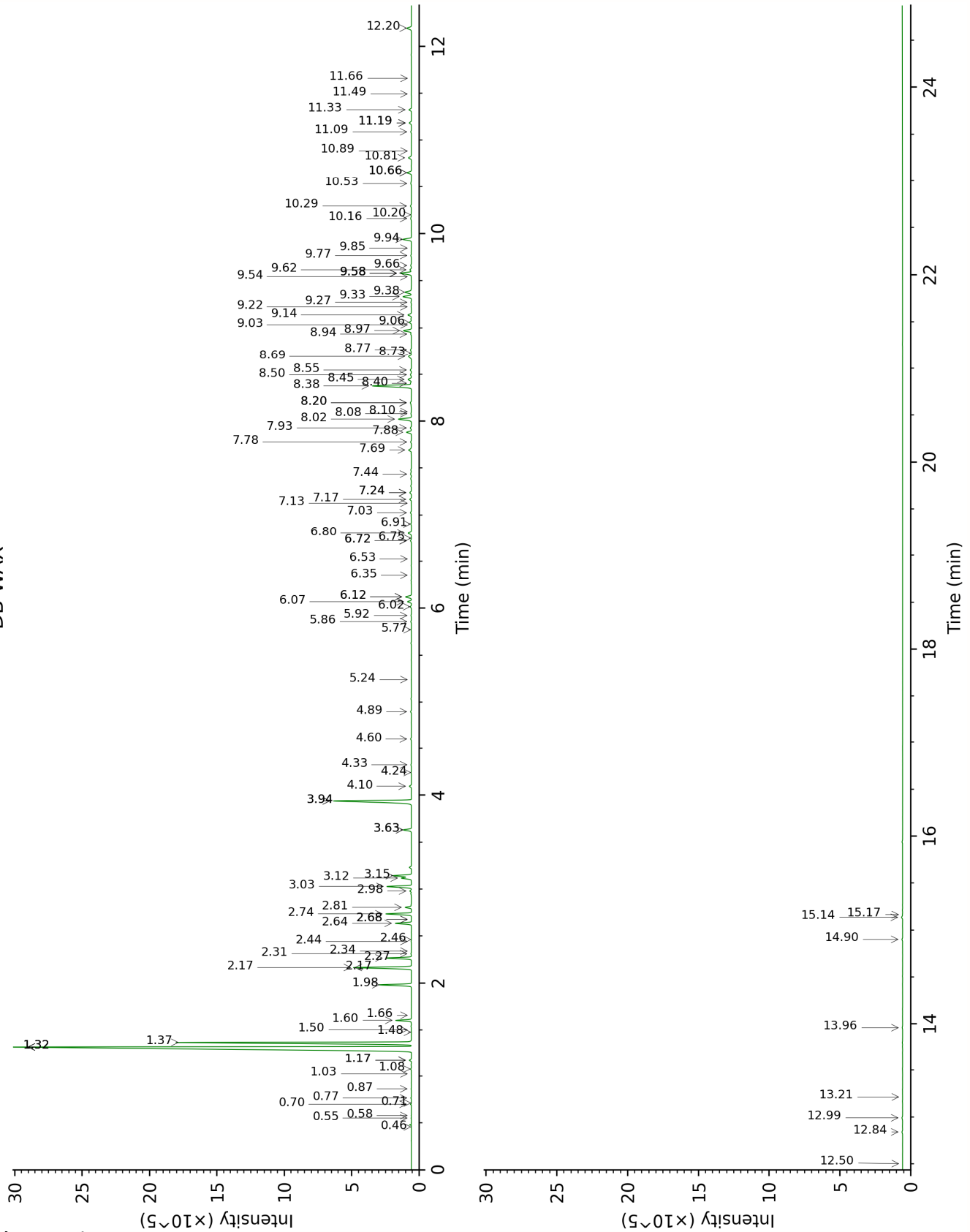
**About "consolidated" data:** The table above presents the breakdown of the sample volatile constituents after applying an algorithm to collapse data acquired from the multi-columns system of PhytoChemia into a single set of consolidated contents. In case of discrepancies between columns, the algorithm is set to prioritize data from the most standard DB-5 column, and smallest values so as to avoid overestimating individual content. This process is semi-automatic. Advanced users are invited to consult the "Full analysis data" table after the chromatograms in this report to access the full untreated data and perform their own calculations if needed.

**Unknowns:** Unknown compounds' mass spectral data is presented in the "Full analysis data" table. The occurrence of unknown compounds is to be expected in many samples, and does not denote particular problems unless noted otherwise in the conclusion.

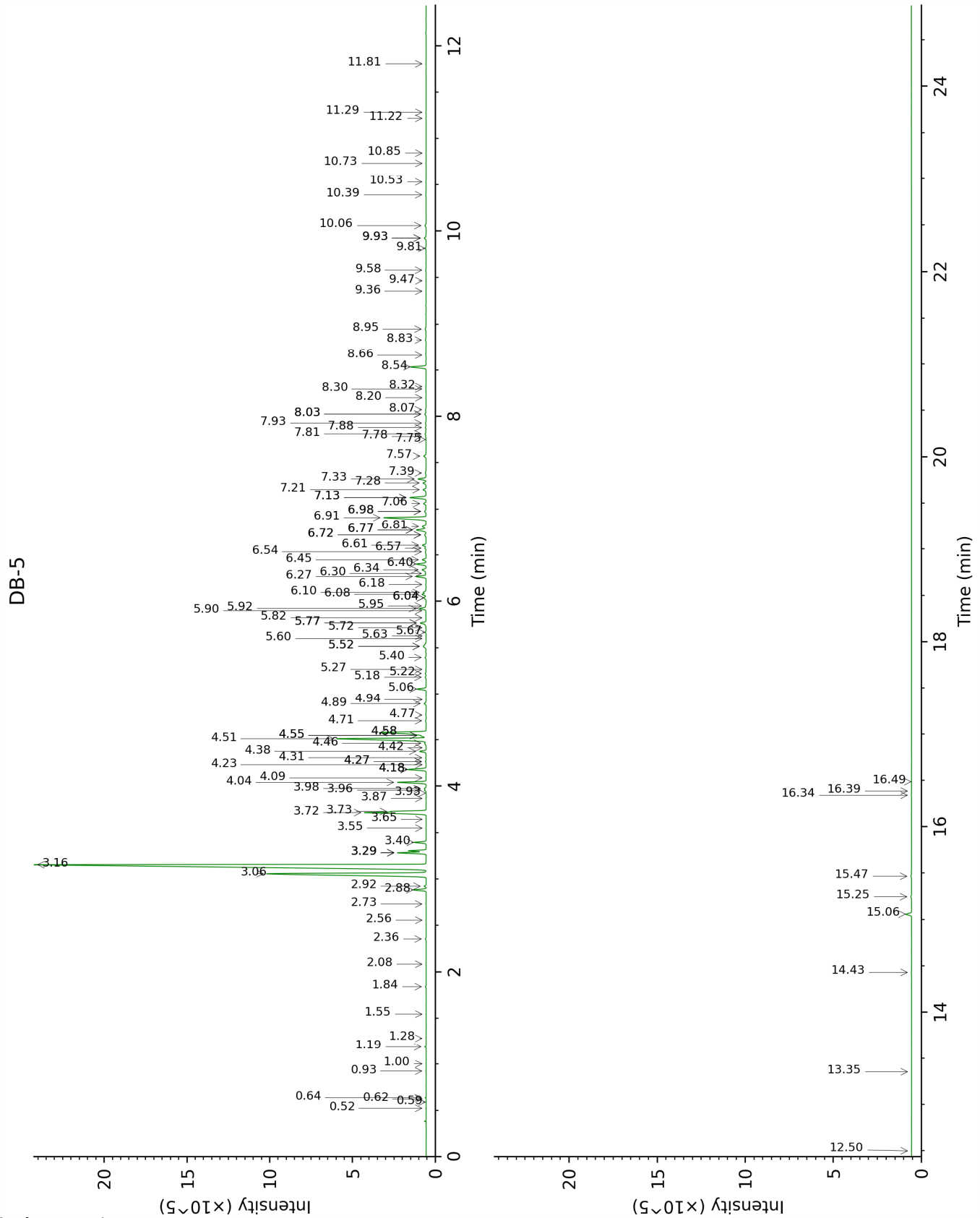
**Bracketed value (xx):** A bracketed percent value indicate that two or more compound percentage could not be solved due to coelution.

This page was intentionally left blank. The following pages present the complete data of the analysis.

DB-WAX







FULL ANALYSIS DATA

2-Methyl-3-buten-2-ol	Column DB-WAX			Column DB-5		
	1.48	1016.0	tr	0.52	608.2	0.01
(E)-2-Methyl-1,3-pentadiene	0.46	767.7	tr	0.59	631.7	0.01
Isovaleral	0.72	887.2	0.01	0.62	643.4	tr
3-Methyl-2-butanone	0.77	905.0	0.02	0.64	648.4	0.02
Unknown BODA I [m/z 93, 91 (70), 77 (48), 108 (42)]	0.55	825.1	0.01	0.92	723.7	0.01
4-Methyl-2-pentanone (Methyl isobutyl ketone)	1.17*	973.5	[0.13]	1.00	734.8	0.01
Toluene	1.32*†	999.1	[43.83]	1.19	761.0	0.05
Hexadiene isomer?				1.28	774.5	0.01
Unknown BODA II [m/z 109, 67 (33), 41 (16), 81 (13)... 124 (8)]	0.58	835.7	0.01	1.55	809.3	0.01
Unknown BOCA I [m/z 109, 67 (32), 81 (14), 41 (12), 124 (10)]	0.70	882.1	0.03	1.84	834.0	0.04
(Z)-Salvene	0.87	921.4	0.02	2.08	854.2	0.01
Unknown BOCA II [m/z 79, 78 (45), 91 (28), 77 (28), 41 (13), 80 (12), 107 (11)... 122 (1)]	1.08	957.5	0.04	2.36	876.9	0.04
Unknown BOFR I [m/z 93, 91 (75), 121 (61), 77 (58), 79 (38), 92 (26), 43 (24), 41 (23), 105 (22), 107 (19), 136 (16)]	1.03	948.7	0.01	2.56	893.7	0.01
Unknown BOFR II [m/z 93, 91 (72), 121 (58), 77 (49), 79 (41), 43 (22), 105 (20), 107 (20), 41 (18), 136 (17), 92 (17)]				2.73	907.7	0.02
Hashishene	1.32*†	999.1	[43.83]	2.88	917.8	0.76
Tricyclene	1.17*	973.5	[0.13]	2.92	920.5	0.13
α-Thujene	1.37*†	1005.0	[15.32]	3.06	929.4	15.28
α-Pinene	1.32*†	999.1	[43.83]	3.16	935.8	43.32
Camphene	1.60	1028.9	0.92	3.28*	944.3	[1.62]
α-Fenchene	1.50	1018.5	0.01	3.28*	944.3	[1.62]

Unknown SAOF I [m/z 91, 92 (47), 65 (11)... 134 (1)]	2.27	1096.3	1.57	3.28*	944.3	[1.62]
Thuja-2,4(10)-diene	2.17*	1086.0	[4.02]	3.40	951.7	0.68
Unknown ZIOF V [m/z 91, 119 (60), 77 (36), 92 (31), 93 (31)... 134 (23)]	2.44	1111.5	0.02	3.55	961.9	0.01
3,7,7-Trimethylcyclohepta-1,3,5-triene?	2.68*	1130.1	[0.01]	3.64	968.2	0.01
Sabinene	2.17*	1086.0	[4.02]	3.72*†	973.0	[4.21]
β-Pinene	1.98	1067.3	2.08	3.73*†	973.8	[1.26]
Pseudolimonene isomer	2.31	1100.9	0.04	3.87	983.1	0.02
cis-Carane	1.66	1034.3	0.01	3.93	986.9	0.01
6-Methyl-5-hepten-2-one	4.89	1299.5	0.07	3.96	988.9	0.09
Dehydro-1,8-cineole	2.98	1154.3	0.11	3.98	990.1	0.11
Myrcene	2.74	1134.9	1.67	4.04	994.6	1.69
6-Methyl-5-hepten-2-ol	6.72*	1431.2	[0.07]	4.09	997.7	0.03
α-Phellandrene	2.64	1126.9	1.05	4.18*	1003.8	[1.20]
Octanal	4.24	1251.3	0.03	4.18*	1003.8	[1.20]
Pseudolimonene	2.68*	1130.1	[0.01]	4.18*	1003.8	[1.20]
Δ3-Carene	2.46	1113.1	tr	4.23	1007.1	0.01
Unknown BOFR V [m/z 119, 91 (86), 41 (24), 79 (19), 77 (19), 134 (16)]				4.27*	1009.1	[0.05]
ortho-Methylanisole	5.77	1362.0	0.02	4.27*	1009.1	[0.05]
Unknown BOSA III [m/z 117, 132 (88), 115 (68), 91 (55), 77 (20)]				4.31	1011.7	0.03
α-Terpinene	2.81	1140.4	0.40	4.38	1016.1	0.41
Carvomenthene	2.34	1103.3	0.01	4.42	1018.5	0.01
meta-Cymene	3.94*	1228.8	[6.71]	4.46	1021.5	0.13
para-Cymene	3.94*	1228.8	[6.71]	4.51	1024.6	6.64
Limonene	3.03	1158.1	1.71	4.55*†	1026.8	[0.28]
Unknown BODA IV [m/z 109, 43 (58), 95 (26)... 137 (15)...]	6.07	1383.5	0.29	4.55*†	1026.8	[0.28]
β-Phellandrene	3.12	1165.2	0.73	4.58*†	1028.8	[3.78]
1,8-Cineole	3.14	1167.3	1.30	4.58*†	1028.8	[3.78]

<i>ortho</i> -Cymene	4.33	1257.4	0.04	4.71	1036.7	0.04
(Z)- $\beta$ -Ocimene	3.63*	1206.0	[0.60]	4.77	1040.6	0.01
Unknown BOFR III [m/z 109, 43 (57), 91 (28), 67 (25), 93 (24), 95 (22), 77 (21), 137 (21), 41 (17), 79 (14)...]	7.17	1464.5	0.14	4.89	1048.4	0.13
Unknown BOFR IV [m/z 109, 45 (67), 41 (40), 67 (39), 81 (33), 79 (27), 95 (24), 91 (23), 82 (21), 55 (21), 93 (20)...]	6.75	1433.2	0.01	4.94	1051.1	0.01
$\gamma$ -Terpinene	3.63*	1206.0	[0.60]	5.06	1058.6	0.58
<i>cis</i> -Sabinene hydrate	6.72*	1431.2	[0.07]	5.18	1066.5	0.06
Unknown PIMA I [m/z 79, 93 (60), 43 (40), 94 (35), 137 (33), 77 (26), 91 (20), 152 (18)]	4.60	1277.8	0.06	5.22	1069.1	0.06
<i>cis</i> -Linalool oxide (fur.)	6.35	1403.8	0.02	5.27	1071.8	0.03
Unknown BODA VI [m/z 43, 94 (63), 109 (61), 59 (55), 79 (51)...152 (2)]	7.03	1453.9	0.08	5.40	1079.9	0.07
Terpinolene	4.10	1240.4	0.15	5.52*	1087.4	[0.38]
<i>para</i> -Cymenene	6.12*	1387.3	[0.49]	5.52*	1087.4	[0.38]
$\alpha$ -Pinene oxide	5.24	1323.7	0.02	5.60	1092.6	0.01
Unknown BOFR VII [m/z 109, 43 (48), 91 (39), 81 (33), 95 (32), 93 (32), 67 (31)... 152 (9)]				5.63	1094.4	0.01
<i>trans</i> -Sabinene hydrate	7.78	1510.4	0.07	5.67	1096.9	0.06
Perillene	5.92	1372.9	0.04	5.72	1100.0	0.02
Linalool	7.88	1518.4	0.38	5.77*	1103.2	[0.48]
$\alpha$ -Thujone	5.86	1368.2	0.05	5.77*	1103.2	[0.48]
Verbenol analog?	8.08	1533.8	0.05	5.82	1106.7	0.03
Unknown BOSE I [m/z 109, 81 (54), 91 (32), 79 (22)...]	6.02	1379.6	0.09	5.90	1111.6	0.03
$\beta$ -Thujone	6.12*	1387.3	[0.49]	5.92	1113.1	0.47
Dehydrosabinaketone	8.40	1559.0	0.07	5.95	1114.8	0.05
<i>trans-para</i> -Mentha-	8.77	1587.2	0.09	6.04*	1120.4	[0.20]

2,8-dien-1-ol						
<i>cis-para</i> -Menth-2-en-1-ol	7.93	1522.0	0.10	6.04*	1120.4	[0.20]
$\alpha$ -Campholenal	6.80	1437.3	0.27	6.08	1122.8	0.28
Unknown BOSE III [m/z 111, 43 (22), 55 (14), 41 (12), 110 (11)...]				6.10	1124.2	0.22
Unknown BONE I [m/z 95, 43 (41), 110 (36), 41 (19), 67 (18)... 150 (tr)]				6.18	1129.6	0.03
<i>trans</i> -Pinocarveol	8.97	1603.2	0.66	6.27	1135.1	0.69
<i>cis</i> -Verbenol	9.06	1610.4	0.18	6.30	1137.2	0.05
<i>trans</i> -Sabinol	9.58*	1652.7	[0.93]	6.34	1139.7	0.35
<i>trans</i> -Verbenol	9.33	1632.6	0.70	6.40	1143.7	0.69
<i>meta</i> -Mentha-4,6-dien-8-ol	9.14	1616.8	0.30	6.45	1146.6	0.27
Sabinaketone	8.50	1566.1	0.09	6.54	1152.1	0.08
Unknown BOCA III [m/z 97, 81 (96), 109 (80), 43 (53), 53 (40), 41 (36), 56 (29), 95 (25)... 152 (1)]	7.24*	1469.9	[0.13]	6.57	1154.6	0.09
Pinocarvone	7.69	1503.7	0.26	6.61	1156.6	0.27
Borneol	9.58*	1652.7	[0.93]	6.72*	1163.7	[0.14]
Unknown CALU II [m/z 95, 110 (38), 81 (21), 79 (16)... 152 (7)]	7.44	1484.6	0.10	6.72*	1163.7	[0.14]
$\alpha$ -Phellandren-8-ol	9.94	1682.0	0.70	6.77*	1167.1	[0.79]
<i>cis</i> -Sabinol	10.66*	1741.9	[0.36]	6.77*	1167.1	[0.79]
Umbellulone	8.69	1581.4	0.31	6.81	1169.5	0.31
Terpinen-4-ol	8.38	1556.9	3.29	6.91	1175.9	3.31
Thuj-3-en-10-al	8.55	1570.0	0.09	6.98*	1180.3	[0.14]
Cryptone	8.94	1600.3	0.06	6.98*	1180.3	[0.14]
<i>para</i> -Cymen-8-ol	11.33	1799.0	0.20	7.06	1185.7	0.20
$\alpha$ -Terpineol	9.58*	1652.7	[0.93]	7.13*	1189.8	[1.16]
Myrtenal	8.45	1562.2	0.31	7.13*	1189.8	[1.16]
Myrtenol	10.66*	1741.9	[0.36]	7.21	1195.2	0.25
<i>cis</i> - $\alpha$ -Phellandrene epoxide (iPr vs Me)	10.81	1755.4	0.27	7.28	1199.8	0.25
Verbenone	9.38	1636.3	0.59	7.33	1202.6	0.58
<i>trans</i> -Piperitol	10.16	1699.9	0.09	7.39	1206.7	0.09
<i>trans</i> -Carveol	11.18*	1787.0	[0.19]	7.57	1218.9	0.20
<i>cis</i> -Carveol	11.49	1813.9	0.02	7.75	1230.9	0.02

Citronellol	10.53	1731.5	0.09	7.78	1233.0	0.04
Cuminal	10.29	1711.2	0.09	7.81	1234.9	0.08
Carvone	9.77	1668.0	0.06	7.88	1239.5	0.05
Carvotanacetone	9.22	1623.7	0.04	7.93	1242.7	0.07
Unknown CALU IV [m/z 43, 97 (69), 107 (46), 41 (28), 55 (21), 109 (20)...]	10.89	1761.5	0.01	8.03*	1249.2	[0.11]
Unknown BODA V [m/z 109, 119 (84), 91 (81), 134 (55)... 137 (27)...]	11.09	1779.0	0.06	8.03*	1249.2	[0.11]
Piperitone	9.66	1659.4	0.07	8.07	1252.4	0.06
Unknown CIGL III [m/z 43, 97 (78), 41 (45), 55 (35), 69 (28), 107 (24), 83 (23)...]	13.22	1970.1	0.01	8.20	1261.0	0.02
3,5- Dimethoxytoluene	11.18*	1787.0	[0.19]	8.30	1267.3	0.03
Unknown PECR X [m/z 109, 43 (83), 95 (70), 110 (70), 99 (53), 119 (48)...]				8.32	1269.0	0.03
Bornyl acetate	8.02	1529.3	1.09	8.54	1283.2	1.08
Cuminol	13.96	2041.1	0.04	8.66	1291.8	0.05
Thymol	14.90	2133.5	0.06	8.83	1303.0	0.06
Carvacrol	15.14	2157.1	0.09	8.95	1311.2	0.11
exo-2-Hydroxycineole acetate	9.85	1674.4	0.02	9.36	1339.9	0.02
$\alpha$ -Cubebene	6.53	1416.7	0.01	9.47	1347.7	0.01
Citronellyl acetate	9.27	1627.6	0.05	9.58	1355.8	0.04
$\alpha$ -Copaene	6.90	1445.0	0.05	9.82	1372.3	0.06
1,5-diepi- $\beta$ - Bourbonene	7.13	1461.5	0.02	9.92*	1380.1	[0.15]
$\beta$ -Bourbonene	7.24*	1469.9	[0.13]	9.92*	1380.1	[0.15]
$\beta$ -Elemene	8.20*	1542.9	[0.16]	10.06	1389.5	0.09
$\beta$ -Caryophyllene	8.20*	1542.9	[0.16]	10.39	1413.3	0.04
$\beta$ -Copaene	8.10	1535.5	0.01	10.53	1423.6	0.02
Isogermacrene D	8.73	1584.5	0.04	10.73	1438.9	0.02
$\alpha$ -Humulene	9.03	1608.2	0.01	10.84	1447.2	0.01
Germacrene D	9.54	1649.7	0.01	11.22	1475.1	0.02
$\beta$ -Selinene	9.62	1655.7	0.12	11.28	1479.9	0.02
$\delta$ -Cadinene	10.20	1703.2	0.06	11.81	1519.6	0.02
Caryophyllene oxide	12.50	1903.9	0.01	12.50	1573.8	0.01
$\beta$ -Eudesmol	15.17	2160.0	0.02	13.35	1642.8	0.01

α-Phellandrene dimer I	11.66	1828.8	0.02	14.43	1733.2	0.02
α-Phellandrene dimer II	12.20	1876.3	0.43	15.06	1787.7	0.43
α-Phellandrene dimer III	12.84	1935.4	0.06	15.25	1804.0	0.07
α-Phellandrene dimer IV	12.99	1949.4	0.07	15.47	1824.0	0.06
α-Phellandrene dimer VI				16.34	1903.5	0.02
α-Phellandrene dimer VII				16.38	1907.7	0.01
α-Phellandrene dimer VIII				16.49	1917.3	0.01
Total reported		97.80%			98.14%	

\*: Two or more compounds are coeluting on this column

[xx]: Duplicate percentage due to coelutions, only the first one is taken into account in the consolidated total

†: Peaks apexes were resolved, but peaks overlapped and were summed for analysis

tr: The compound has been detected below 0.005% of total signal.

Note: no correction factor was applied

R.T.: Retention time (minutes)

R.I.: Retention index