

Date : 2025-02-14

CERTIFICATE OF ANALYSIS - GC PROFILING

SAMPLE IDENTIFICATION

Internal code : 25B03-PTH02

Customer Identification : Manuka - Australia - MF0110R

Type : Essential Oil

Source : *Leptospermum scoparium*

Customer : Plant Therapy

Checked and approved by:

Sylvain Mercier, M. Sc., Chimiste 2014-005

Notes: This report may not be published, including online, without the written consent from Laboratoire PhytoChemia. This report is digitally signed, it is only considered valid if the digital signature is intact. The results only describe the samples that were submitted to the assays.

GAS CHROMATOGRAPHIC ANALYSIS

Method : PC-MAT-014 - Analysis of the composition of an essential oil or other volatile liquide by FAST GC-FID

✖ISO

Results : See analysis summary (next page)

Analyst : Sylvain Mercier, M. Sc., Chimiste 2014-005

Date : 2025-02-11

PHYSICOCHEMICAL DATA

Refractive index : 1.502 ± 0.0003 (20 °C)

Method : PC-MAT-016 - Measure of the refractive index of a liquid.

Analyst : Cindy Caron B. Sc.

Date : 2025-02-03

CONCLUSION

No adulterant, contaminant or diluent has been detected using this method.

ANALYSIS SUMMARY - CONSOLIDATED CONTENTS

New readers of similar reports are encouraged to read table footnotes at least once.

Identification	%	Class
Isovaleral	0.01	Aliphatic aldehyde
2-Methylbutyral	tr	Aliphatic aldehyde
2,4-Dimethyl-3-pentanone	0.02	Aliphatic ketone
Octane	0.01	Alkane
(3Z)-Hexenol	0.02	Aliphatic alcohol
Hashishene	tr	Monoterpene
α -Thujene	0.03	Monoterpene
α -Pinene	0.65	Monoterpene
Sabinene	0.03	Monoterpene
β -Pinene	0.12	Monoterpene
6-Methyl-5-hepten-2-one	0.01	Aliphatic ketone
Myrcene	0.46	Monoterpene
Octanal	0.04	Aliphatic aldehyde
α -Phellandrene	tr	Monoterpene
(3Z)-Hexenyl acetate	0.05	Aliphatic ester
α -Terpinene	0.04	Monoterpene
<i>para</i> -Cymene	0.10	Monoterpene
1,8-Cineole	0.23	Monoterpenic ether
Limonene	0.09	Monoterpene
(Z)- β -Ocimene	0.01	Monoterpene
(E)- β -Ocimene	0.03	Monoterpene
γ -Terpinene	0.11	Monoterpene
Octanol	0.02	Aliphatic alcohol
Terpinolene	0.05	Monoterpene
<i>para</i> -Cymenene	tr	Monoterpene
Linalool	0.09	Monoterpenic alcohol
Amyl isovalerate	0.09	Aliphatic ester
endo-Fenchol	0.04	Monoterpenic alcohol
3-Methyl-3-butenyl isovalerate	0.08	Aliphatic ester
Prenyl isovalerate	0.01	Aliphatic ester
Dimethyloctanedione isomer	0.01	β -Diketone
2,7-Dimethyl-3,5-octanedione	0.06	β -Diketone
Terpinen-4-ol	0.06	Monoterpenic alcohol
α -Terpineol	0.06	Monoterpenic alcohol
2-Methylbutyl tiglate	0.10	Aliphatic ester
3-Methyl-3-butenyl tiglate	0.03	Aliphatic ester
Benzylacetone	0.01	Simple phenolic
Prenyl tiglate	0.03	Aliphatic ester
Geraniol	0.01	Monoterpenic alcohol
(2E)-Decenal	0.01	Aliphatic aldehyde

Undec-(5Z)-en-2-one	0.05	Aliphatic ketone
2-Undecanone	0.04	Aliphatic ketone
Methyl geranate	0.02	Monoterpenic ester
Bicycloelemene	0.02	Sesquiterpene
α -Cubebene	4.48	Sesquiterpene
Longicyclene	0.02	Sesquiterpene
α -Ylangene	0.21	Sesquiterpene
Methyl (E)-cinnamate	4.75	Phenylpropanoid ester
Modhephene	0.04	Sesquiterpene
β -Bourbonene	0.02	Sesquiterpene
α -Isocomene	0.05	Sesquiterpene
<i>cis</i> - β -Elemene	0.06	Sesquiterpene
Benzyl 2-methylbutyrate?	0.07	Phenolic ester
β -Cubebene	0.10	Sesquiterpene
β -Elemene	1.43	Sesquiterpene
Benzyl isovalerate	0.26	Phenolic ester
α -Gurjunene	1.04	Sesquiterpene
Unknown	0.03	Sesquiterpene
β -Caryophyllene	3.01	Sesquiterpene
β -Ylangene	0.07	Sesquiterpene
γ -Maaliene	0.05	Sesquiterpene
β -Copaene	0.19	Sesquiterpene
<i>cis</i> -Thujopsene	0.03	Sesquiterpene
β -Gurjunene	0.06	Sesquiterpene
α -Maaliene	0.08	Sesquiterpene
Aromadendrene	1.58	Sesquiterpene
α -Guaiene	0.21	Sesquiterpene
Selina-5,11-diene	0.06	Sesquiterpene
6,9-Guaiadiene	0.13	Sesquiterpene
<i>trans</i> -Muurolo-3,5-diene	4.91	Sesquiterpene
α -Humulene	0.33	Sesquiterpene
allo-Aromadendrene	0.59	Sesquiterpene
<i>cis</i> -Cadina-1(6),4-diene	0.06	Sesquiterpene
4,5-diepi-Aristolochene	0.11	Sesquiterpene
<i>trans</i> -Cadina-1(6),4-diene	4.02	Sesquiterpene
Selina-4,11-diene	0.98	Sesquiterpene
γ -Murolene	0.99	Sesquiterpene
Germacrene D	0.31	Sesquiterpene
β -Selinene	6.10	Sesquiterpene
allo-Aromadendr-9-ene	0.18	Sesquiterpene
δ -Selinene	0.02	Sesquiterpene
Eudesma-3,5,11-triene	0.07	Sesquiterpene
<i>trans</i> -Muurolo-4(15),5-diene	1.00	Sesquiterpene
α -Selinene	5.56	Sesquiterpene
Viridiflorene	0.77	Sesquiterpene

Bicyclogermacrene	0.72	Sesquiterpene
Germacrene A	0.85	Sesquiterpene
α -Muurolene	0.18	Sesquiterpene
δ -Amorphene	0.23	Sesquiterpene
δ -Guaiene	0.18	Sesquiterpene
Unknown	0.09	Sesquiterpene
(3E,6E)- α -Farnesene	1.42	Sesquiterpene
γ -Cadinene	0.85	Sesquiterpene
7-epi- α -Selinene	0.06	Sesquiterpene
Zonarene	1.65	Sesquiterpene
cis-Calamenene	0.11	Sesquiterpene
δ -Cadinene	5.54	Sesquiterpene
trans-Calamenene	8.19	Sesquiterpene
trans-Cadina-1,4-diene	5.31	Sesquiterpene
α -Cadinene	0.13	Sesquiterpene
Unknown	0.28	Sesquiterpene
α -Calacorene	0.38	Sesquiterpene
Flavesone	5.31	Norsesquiterpenic ketone
Isocaryophyllene epoxide B	0.12	Sesquiterpenic ether
Germacrene B	0.06	Sesquiterpene
Epiglobulol	0.08	Sesquiterpenic alcohol
Unknown	0.07	Oxygenated sesquiterpene
1 α ,10 α -Epoxyamorph-4-ene	0.01	Sesquiterpenic ether
Palustrol	0.14	Sesquiterpenic alcohol
β -Calacorene	0.01	Sesquiterpene
(E)-Nerolidol	0.09	Sesquiterpenic alcohol
Spathulenol	0.39	Sesquiterpenic alcohol
Caryophyllene oxide	0.31	Sesquiterpenic ether
Globulol	0.25	Sesquiterpenic alcohol
Gleenol	0.18	Sesquiterpenic alcohol
Viridiflorol	0.08	Sesquiterpenic alcohol
Cubeban-11-ol	0.08	Sesquiterpenic alcohol
Ledol	0.20	Sesquiterpenic alcohol
Eudesm-5-en-11-ol	0.07	Sesquiterpenic alcohol
Unknown	0.20	Oxygenated sesquiterpene
Unknown	0.05	Oxygenated sesquiterpene
Isoleptospermone	3.92	Sesquiterpenic ketone
Caryophylladienol II	0.04	Sesquiterpenic alcohol
Leptospermone	11.33	Sesquiterpenic ketone
Isospathulenol	0.18	Sesquiterpenic alcohol
Jinkoh-eremol	0.02	Sesquiterpenic alcohol
τ -Cadinol	0.22	Sesquiterpenic alcohol
τ -Muurolol	0.13	Sesquiterpenic alcohol
α -Muurolol	0.10	Sesquiterpenic alcohol
β -Eudesmol	0.09	Sesquiterpenic alcohol

α -Cadinol	0.06	Sesquiterpenic alcohol
α -Eudesmol	0.07	Sesquiterpenic alcohol
Selin-11-en-4 α -ol	0.05	Sesquiterpenic alcohol
<i>cis</i> -Calamene-10-ol	0.06	Sesquiterpenic alcohol
Unknown	0.05	Unknown
<i>trans</i> -Calamene-10-ol	0.04	Sesquiterpenic alcohol
(3 <i>Z</i>)-Caryophylla-3,8(13)-dien-5 β -ol	0.06	Sesquiterpenic alcohol
Unknown	0.04	Oxygenated sesquiterpene
Unknown	0.04	Oxygenated sesquiterpene
Unknown	0.24	Unknown
<i>trans</i> -14-nor-Cadina-5-en-4-one	0.15	Norsesquiterpenic ketone
(2 <i>E</i> ,6 <i>E</i>)-Farnesol	0.03	Sesquiterpenic alcohol
14-Hydroxy- <i>trans</i> -calamenene	0.04	Sesquiterpenic alcohol
Phytol	0.02	Diterpenic alcohol
Grandiflorone	0.25	Terpenophenolic
Consolidated total	98.16	

tr: The compound has been detected below 0.005% of the total signal

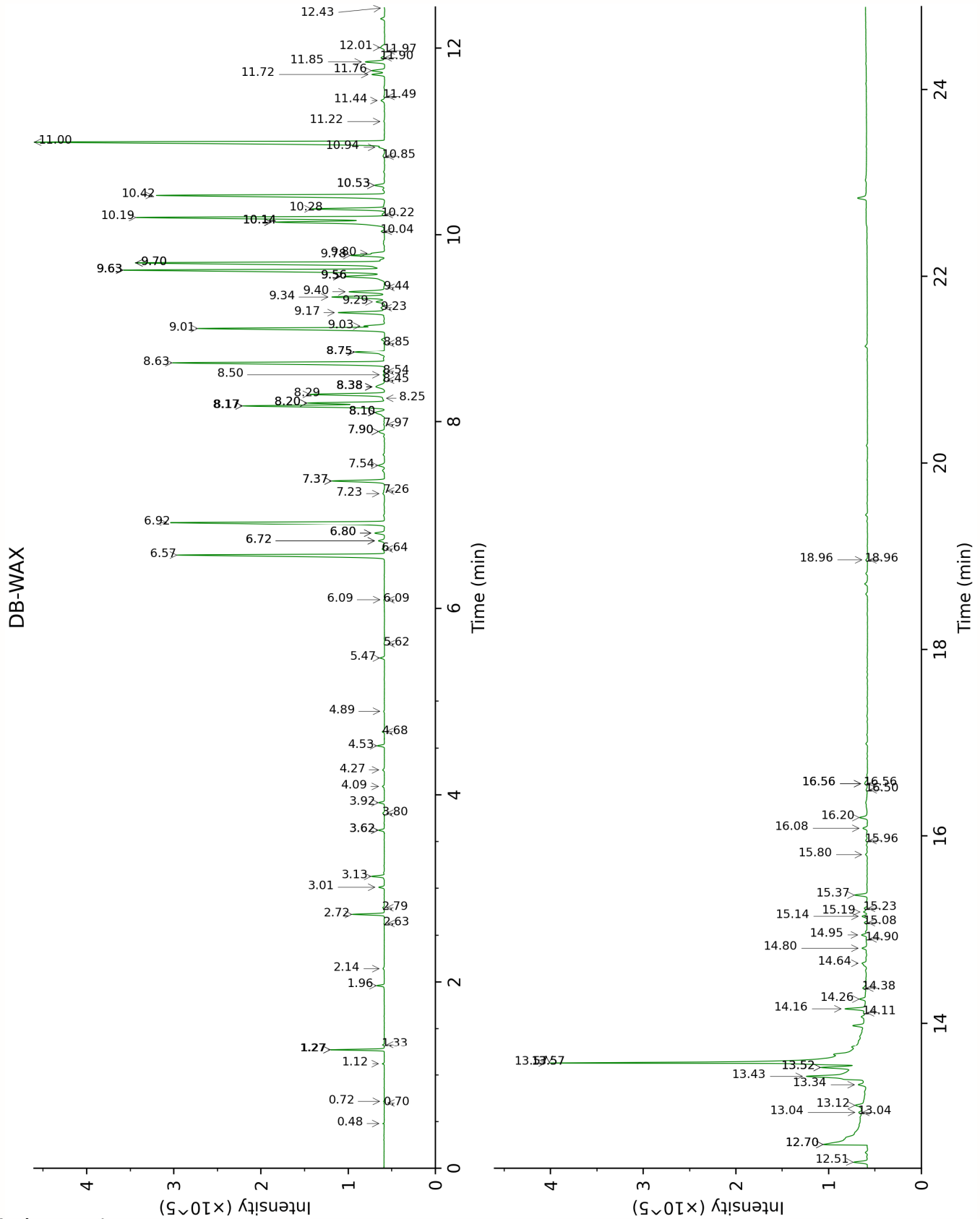
Note: no correction factor was applied

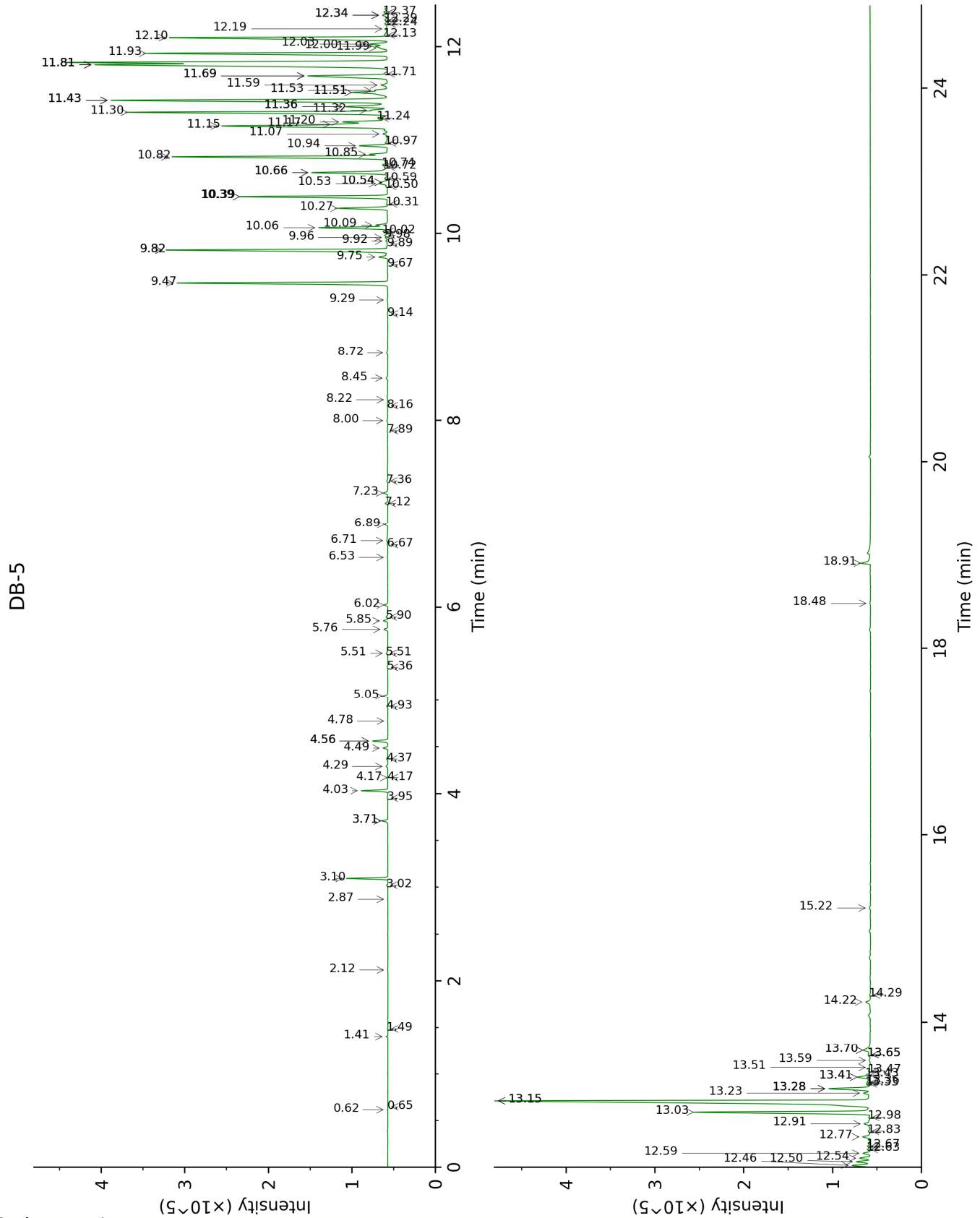
About "consolidated" data: The table above presents the breakdown of the sample volatile constituents after applying an algorithm to collapse data acquired from the multi-columns system of PhytoChemia into a single set of consolidated contents. In case of discrepancies between columns, the algorithm is set to prioritize data from the most standard DB-5 column, and smallest values so as to avoid overestimating individual content. This process is semi-automatic. Advanced users are invited to consult the "Full analysis data" table after the chromatograms in this report to access the full untreated data and perform their own calculations if needed.

Unknowns: Unknown compounds' mass spectral data is presented in the "Full analysis data" table. The occurrence of unknown compounds is to be expected in many samples, and does not denote particular problems unless noted otherwise in the conclusion.

Bracketed value ([xx]): A bracketed percent value indicate that two or more compound percentage could not be solved due to coelution.

This page was intentionally left blank. The following pages present the complete data of the analysis.





FULL ANALYSIS DATA

Isovaleral	Column DB-WAX			Column DB-5		
	0.72	888.5	0.01	0.62	641.3	0.01
2-Methylbutyral	0.70	881.8	tr	0.65	652.2	tr
2,4-Dimethyl-3-pentanone	1.12	964.9	0.02	1.41	792.0	0.02
Octane	0.48	786.7	0.01	1.49	803.6	0.01
(3Z)-Hexenol	5.62	1351.2	0.01	2.12	857.1	0.02
Hashishene	1.27*	990.5	[0.65]	2.87	917.1	tr
α -Thujene	1.33	1000.5	0.02	3.02	927.0	0.03
α -Pinene	1.27*	990.5	[0.65]	3.10	931.8	0.65
Sabinene	2.14	1083.7	0.03	3.71*	972.5	[0.14]
β -Pinene	1.96	1065.2	0.12	3.71*	972.5	[0.14]
6-Methyl-5-hepten-2-one	4.89	1299.7	0.02	3.95	988.6	0.01
Myrcene	2.72	1133.8	0.47	4.03	993.8	0.46
Octanal	4.27	1253.1	0.04	4.17*	1003.1	[0.02]
α -Phellandrene	2.63	1126.0	tr	4.17*	1003.1	[0.02]
(3Z)-Hexenyl acetate	4.68	1283.4	0.04	4.29	1010.8	0.05
α -Terpinene	2.80	1139.4	0.03	4.37	1015.7	0.04
<i>para</i> -Cymene	3.92	1227.1	0.10	4.49	1023.0	0.10
1,8-Cineole	3.13	1166.1	0.23	4.56*	1027.7	[0.31]
Limonene	3.01	1156.9	0.09	4.56*	1027.7	[0.31]
(Z)- β -Ocimene	3.62*	1205.4	[0.11]	4.78	1041.1	0.01
(E)- β -Ocimene	3.80	1218.7	0.03	4.93	1050.9	0.03
γ -Terpinene	3.62*	1205.4	[0.11]	5.05	1058.1	0.11
Octanol	7.97	1525.4	0.02	5.36	1077.4	0.02
Terpinolene	4.09	1240.0	0.05	5.51*	1086.9	[0.05]
<i>para</i> -Cymenene	6.09*	1385.1	[0.01]	5.51*	1086.9	[0.05]
Linalool	7.90*	1519.6	[0.16]	5.76	1102.8	0.09
Amyl isovalerate	4.52	1272.2	0.12	5.85	1108.6	0.09
endo-Fenchol	8.17*†	1540.9	[3.05]	5.90	1111.3	0.04
3-Methyl-3-butenyl isovalerate	5.47	1340.3	0.08	6.02	1119.4	0.08
Prenyl isovalerate	6.09*	1385.1	[0.01]	6.53	1151.8	0.01
Dimethyloctanedione isomer	6.64	1424.9	0.06	6.67	1160.6	0.01
2,7-Dimethyl-3,5-octanedione	6.72*	1431.4	[0.13]	6.71	1163.3	0.06
Terpinen-4-ol	8.38*	1556.7	[0.32]	6.89	1174.4	0.06
α -Terpineol	9.56*	1650.8	[1.13]	7.12	1189.1	0.06
2-Methylbutyl tiglate	6.72*	1431.4	[0.13]	7.23	1196.2	0.10
3-Methyl-3-butenyl tiglate				7.36	1204.4	0.03
Benzylacetone	11.22	1789.7	0.02	7.89	1240.3	0.01

Prenyl tiglate	8.54	1569.6	0.03	8.00	1247.5	0.03
Geraniol	11.44	1809.3	0.10	8.16	1258.1	0.01
(2E)-Decenal	8.85	1593.3	0.02	8.22	1262.3	0.01
Undec-(5Z)-en-2-one	8.75*	1585.6	[0.66]	8.45	1277.8	0.05
2-Undecanone	8.38*	1556.7	[0.32]	8.72	1296.0	0.04
Methyl geranate	9.56*	1650.8	[1.13]	9.14	1325.1	0.02
Bicycloelemene	6.80*	1437.5	[0.20]	9.29	1335.5	0.02
α -Cubebene	6.57	1420.0	4.48	9.47	1348.3	4.48
Longicyclene	6.92	1446.4	4.82	9.67	1362.2	0.02
α -Ylangene	6.80*	1437.5	[0.20]	9.75	1367.7	0.21
Methyl (E)-cinnamate	13.57*†	2003.2	[10.93]	9.82*	1372.9	[4.79]
Modhephene	7.23	1469.4	0.04	9.82*	1372.9	[4.79]
β -Bourbonene	7.26	1471.6	0.02	9.89	1377.6	0.02
α -Isocomene	7.37*	1479.5	[1.03]	9.92	1379.8	0.05
cis- β -Elemene	8.10*	1535.4	[0.32]	9.96	1382.4	0.06
Benzyl 2-methylbutyrate?	11.49	1813.2	0.03	9.98	1384.0	0.07
β -Cubebene	7.54	1491.9	0.15	10.02	1386.9	0.10
β -Elemene	8.20*†	1543.2	[1.48]	10.06	1389.7	1.43
Benzyl isovalerate	11.72	1834.0	0.25	10.09	1391.6	0.26
α -Gurjunene	7.37*	1479.5	[1.03]	10.27	1404.3	1.04
Unknown EUGL V [m/z 119, 107 (86), 105 (85), 93 (78), 189 (66), 81 (65), 121 (64)... 204 (23)]				10.32	1407.7	0.03
β -Caryophyllene	8.17*†	1540.9	[3.05]	10.39*	1413.5	[3.08]
β -Ylangene	7.90*	1519.6	[0.16]	10.39*	1413.5	[3.08]
γ -Maaliene	8.25	1547.2	0.04	10.50	1421.7	0.05
β -Copaene	8.10*	1535.4	[0.32]	10.53	1423.8	0.19
cis-Thujopsene	8.45	1562.2	0.03	10.54*	1424.8	[0.09]
β -Gurjunene	8.10*	1535.4	[0.32]	10.54*	1424.8	[0.09]
α -Maaliene	8.38*	1556.7	[0.32]	10.59	1427.9	0.08
Aromadendrene	8.30	1550.4	1.58	10.66*	1433.1	[1.79]
α -Guaiene	8.20*†	1543.2	[1.48]	10.66*	1433.1	[1.79]
Selina-5,11-diene	8.50	1566.7	0.04	10.72	1437.5	0.06
6,9-Guaiadiene	8.38*	1556.7	[0.32]	10.74	1439.3	0.13
trans-Muurolo-3,5-diene	8.63	1576.6	4.77	10.82	1445.7	4.91
α -Humulene	9.03	1608.0	0.36	10.85	1447.6	0.33
allo-Aromadendrene	8.75*	1585.6	[0.66]	10.94	1454.4	0.59
cis-Cadina-1(6),4-diene	8.75*	1585.6	[0.66]	10.97	1456.7	0.06
4,5-diepi-Aristolochene	9.23	1623.9	0.10	11.07	1463.8	0.11

<i>trans</i> -Cadina-1(6),4-diene	9.00	1605.9	4.02	11.15*†	1470.2	[4.35]
Selina-4,11-diene	9.17	1619.6	0.98	11.17*†	1471.4	[0.62]
γ-Muurolene	9.34	1633.1	1.17	11.20	1473.4	0.99
Germacrene D	9.56*	1650.8	[1.13]	11.24	1476.5	0.31
β-Selinene	9.63*	1656.3	[6.02]	11.30*†	1481.0	[6.05]
allo-Aromadendr-9-ene	9.29	1628.9	0.18	11.32*†	1482.6	[0.24]
δ-Selinene	9.44	1641.4	0.02	11.36*	1485.5	[1.09]
Eudesma-3,5,11-triene	10.04	1689.9	0.07	11.36*	1485.5	[1.09]
<i>trans</i> -Muurola-4(15),5-diene	9.63*	1656.3	[6.02]	11.36*	1485.5	[1.09]
α-Selinene	9.70*	1662.6	[6.26]	11.43*	1490.5	[7.06]
Viridiflorene	9.40	1637.6	0.77	11.43*	1490.5	[7.06]
Bicyclogermacrene	9.78	1669.1	0.72	11.43*	1490.5	[7.06]
Germacrene A	10.14*	1697.9	[2.74]	11.51*	1496.9	[1.03]
α-Muurolene	9.80	1670.8	0.18	11.51*	1496.9	[1.03]
δ-Amorphene	9.70*	1662.6	[6.26]	11.53	1498.5	0.23
δ-Guaiene	9.63*	1656.3	[6.02]	11.59	1502.7	0.18
Unknown EUGL VII [m/z 159, 145 (91), 131 (67), 105 (46), 202 (43)]	10.53*	1731.1	[0.23]	11.69*	1510.2	[2.37]
(3E,6E)-α-Farnesene	10.28	1709.8	1.42	11.69*	1510.2	[2.37]
γ-Cadinene	10.14*	1697.9	[2.74]	11.69*	1510.2	[2.37]
7-epi-α-Selinene	10.22	1704.7	0.06	11.71	1512.0	0.06
Zonarene	10.14*	1697.9	[2.74]	11.81*†	1519.6	[8.85]
<i>cis</i> -Calamenene	10.94	1766.3	0.11	11.81*†	1519.6	[8.85]
δ-Cadinene	10.19	1702.0	5.54	11.81*†	1519.6	[8.85]
<i>trans</i> -Calamenene	11.00	1770.9	8.19	11.81*†	1519.6	[8.85]
<i>trans</i> -Cadina-1,4-diene	10.42	1722.0	5.27	11.93	1529.1	5.31
α-Cadinene	10.53*	1731.1	[0.23]	11.99	1533.6	0.13
Unknown JUOX V [m/z 157, 143 (86), 200 (43), 142 (36), 141 (28), 128 (25)]	11.76	1837.7	0.28	12.00	1534.9	0.28
α-Calacorene	11.85	1846.0	0.41	12.03	1536.9	0.38
Flavesone	12.70*†	1922.0	[4.15]	12.10	1542.3	5.31
Isocaryophyllene epoxide B	11.90	1849.9	0.08	12.13	1544.6	0.12
Germacrene B	10.85	1758.2	0.06	12.19	1549.7	0.06
Epiglobulol	13.04*†	1953.9	[0.37]	12.24	1553.8	0.08
Unknown MEAL III	13.04*†	1953.9	[0.37]	12.28	1557.0	0.07

[m/z 161, 109 (98), 82 (93), 43 (72), 105 (68), 93 (59), 69 (56), 119 (55)... 222 (7)]						
1 α ,10 α -Epoxyamorph-4-ene	11.97	1856.4	0.01	12.34*	1561.1	[0.14]
Palustrol	12.01	1859.6	0.14	12.34*	1561.1	[0.14]
β -Calacorene	12.43	1897.6	0.01	12.34*	1561.1	[0.14]
(<i>E</i>)-Nerolidol	13.52*†	1998.6	[1.19]	12.37	1563.9	0.09
Spathulenol	14.16*†	2059.9	[0.58]	12.46	1570.9	0.39
Caryophyllene oxide	12.51	1904.4	0.27	12.50	1574.1	0.31
Globulol	13.57*†	2003.2	[10.93]	12.54	1577.1	0.25
Gleenol	13.34	1981.4	0.29	12.59	1581.2	0.18
Viridiflorol	13.57*†	2003.2	[10.93]	12.63	1584.4	0.08
Cubeban-11-ol	13.52*†	1998.6	[1.19]	12.67	1587.3	0.08
Ledol	13.12*†	1961.0	[0.93]	12.77	1595.0	0.20
Eudesm-5-en-11-ol	14.11*†	2055.8	[0.10]	12.83	1599.7	0.07
Unknown MIAL II [m/z 43, 81 (97), 135 (71), 95 (62), 204 (61), 71 (59), 207 (56)... 222 (3)]	14.26*†	2070.0	[0.30]	12.91	1606.0	0.20
Unknown MECA V [m/z 179, 161 (66), 119 (44), 95 (38), 105 (35)... 204 (24), 222 (1)]	14.38*†	2081.4	[0.19]	12.98	1611.7	0.05
Isoleptospermone	12.70*†	1922.0	[4.15]	13.03	1616.2	3.92
Caryophylladienol II	15.80	2225.3	0.04	13.15*	1626.3	[11.37]
Leptospermone	13.43*†	1989.7	[2.95]	13.15*	1626.3	[11.37]
Isospathulenol	15.19	2162.6	0.09	13.24	1633.0	0.18
Jinkoh-eremol	14.90	2133.6	0.02	13.28*	1637.0	[0.98]
τ -Cadinol	14.64	2107.4	0.22	13.28*	1637.0	[0.98]
τ -Muurolol	14.80	2123.6	0.13	13.28*	1637.0	[0.98]
α -Muurolol	14.94	2137.8	0.14	13.33	1641.2	0.10
β -Eudesmol	15.14	2157.9	0.11	13.36	1642.9	0.09
α -Cadinol	15.23	2166.5	0.06	13.41*	1647.2	[0.36]
α -Eudesmol	15.08	2151.1	0.07	13.41*	1647.2	[0.36]
Selin-11-en-4 α -ol	15.37	2180.7	0.25	13.43	1649.1	0.05
<i>cis</i> -Calamene-10-ol	16.20	2266.7	0.19	13.47	1652.6	0.06
Unknown JUOX X [m/z 175, 157 (15), 105 (13), 119 (13), 176 (13), 142 (9)...]	16.08	2254.7	0.10	13.51	1655.8	0.05
<i>trans</i> -Calamene-10-	16.56*	2305.0	[0.09]	13.59	1662.0	0.04

ol						
(3Z)-Caryophylla-3,8(13)-dien-5β-ol	16.56*	2305.0	[0.09]	13.65*	1667.0	[0.10]
Unknown LESC III [m/z 159, 118 (33), 91 (30), 131 (30)... 220? (4)]	15.96	2241.2	0.04	13.65*	1667.0	[0.10]
Unknown RHGR XIV [m/z 107, 91 (95), 93 (87), 79 (86), 105 (78), 41 (76), 95 (72)... 220 (18)]	16.50	2297.9	0.04	13.70*	1671.0	[0.28]
Unknown LESC V [m/z 175, 91 (94), 105 (51), 218 (33), 104 (17), 176 (12)...]				13.70*	1671.0	[0.28]
<i>trans</i> -14-nor-Cadina-5-en-4-one				14.22	1714.5	0.15
(2E,6E)-Farnesol	16.56*	2305.0	[0.09]	14.29	1721.0	0.03
14-Hydroxy- <i>trans</i> -calamenene	18.96*	2574.8	[0.04]	15.22	1801.7	0.04
Phytol	18.96*	2574.8	[0.04]	18.48	2112.2	0.02
Grandiflorone				18.91	2156.7	0.25
Total reported		97.29%			98.90%	

*: Two or more compounds are coeluting on this column

[xx]: Duplicate percentage due to coelutions, only the first one is taken into account in the consolidated total

†: Peaks apexes were resolved, but peaks overlapped and were summed for analysis

tr: The compound has been detected below 0.005% of total signal.

Note: no correction factor was applied
R.T.: Retention time (minutes)
R.I.: Retention index