

Date : 2023-12-21

CERTIFICATE OF ANALYSIS - GC PROFILING

SAMPLE IDENTIFICATION

**Internal code :** 23L14-PTH05

**Customer Identification :** Lemongrass - India - L80115R

**Type :** Essential Oil

**Source :** *Cymbopogon flexuosus*

**Customer :** Plant Therapy

Checked and approved by:

---

Alexis St-Gelais, Ph. D., Chimiste 2013-174

*Notes: This report may not be published, including online, without the written consent from Laboratoire PhytoChemia. This report is digitally signed, it is only considered valid if the digital signature is intact. The results only describe the samples that were submitted to the assays.*

## GAS CHROMATOGRAPHIC ANALYSIS

**Method :** PC-MAT-014 - Analysis of the composition of an essential oil or other volatile liquide by FAST GC-FID

**✖ISO**

**Results :** See analysis summary (next page)

**Analyst :** Sylvain Mercier, M. Sc., Chimiste 2014-005

**Date :** 2023-12-20

## PHYSICOCHEMICAL DATA

**Refractive index :**  $1.4858 \pm 0.0003$  (20 °C)

**Method :** PC-MAT-016 - Measure of the refractive index of a liquid.

**Analyst :** Cindy Caron B. Sc.

**Date :** 2023-12-19

## CONCLUSION

No adulterant, contaminant or diluent has been detected using this method.

## ANALYSIS SUMMARY - CONSOLIDATED CONTENTS

New readers of similar reports are encouraged to read table footnotes at least once.

Identification	%	Class
Isobutyral	tr	Aliphatic aldehyde
2-Methyl-3-buten-2-ol	0.03	Aliphatic alcohol
Isovaleral	0.01	Aliphatic aldehyde
2-Methylbutyral	0.01	Aliphatic aldehyde
2-Ethylfuran	tr	Furan
Isoamyl alcohol	0.01	Aliphatic alcohol
Hexanal	tr	Aliphatic aldehyde
Unknown	0.01	Unknown
(3Z)-Hexenol	0.01	Aliphatic alcohol
4-Heptanone	0.02	Aliphatic ketone
Unknown	0.01	Unknown
Tricyclene	0.09	Monoterpene
(E)-2,4-Dimethyl-2,4-heptadiene	0.01	Alkene
$\alpha$ -Pinene	0.14	Monoterpene
Camphene	0.74	Monoterpene
Sabinene	0.01	Monoterpene
$\beta$ -Pinene	0.01	Monoterpene
6-Methyl-5-hepten-2-one	1.12	Aliphatic ketone
Myrcene	0.07	Monoterpene
6-Methyl-5-hepten-2-ol	0.06	Aliphatic alcohol
$\alpha$ -Phellandrene	0.01	Monoterpene
Octanal	0.07	Aliphatic aldehyde
$\alpha$ -Terpinene	0.01	Monoterpene
<i>para</i> -Cymene	0.01	Monoterpene
Limonene	0.20	Monoterpene
1,8-Cineole	0.04	Monoterpenic ether
(Z)- $\beta$ -Ocimene	0.29	Monoterpene
Benzeneacetaldehyde	0.02	Simple phenolic
(E)- $\beta$ -Ocimene	0.18	Monoterpene
2,6-Dimethyl-5-heptenal (melonal)	0.03	Aliphatic aldehyde
$\gamma$ -Terpinene	0.01	Monoterpene
<i>cis</i> -Linalool oxide (fur.)	0.02	Monoterpenic alcohol
4-Nonanone	0.70	Aliphatic ketone
Octanol	0.01	Aliphatic alcohol
Camphenilone	0.01	Normonoterpenic ketone
<i>trans</i> -Linalool oxide (fur.)	0.01	Monoterpenic alcohol
Terpinolene	0.04	Monoterpene
4-Nonanol	0.01	Aliphatic alcohol
Perillene	[0.21]	Monoterpenic ether
Rosefuran	[0.21]	Monoterpenic ether

<i>cis</i> -Chrysanthemal?	0.21	Monoterpenic aldehyde
Linalool	0.97	Monoterpenic alcohol
( <i>Z</i> )-6-Methyl-3,5-heptadien-2-one	0.03	Aliphatic ketone
<i>trans-para</i> -Mentha-2,8-dien-1-ol	0.01	Monoterpenic alcohol
Unknown	0.02	Unknown
Unknown	0.03	Unknown
Unknown	0.12	Unknown
<i>trans</i> -Chrysanthemal	0.27	Monoterpenic aldehyde
<i>exo</i> -Isocitral	0.15	Monoterpenic aldehyde
<i>trans</i> -Chrysanthemol	0.04	Monoterpenic alcohol
Citronellal	0.36	Monoterpenic aldehyde
Borneol	0.14	Monoterpenic alcohol
Isoneral	1.05	Monoterpenic aldehyde
$\alpha$ -Phellandren-8-ol	0.06	Monoterpenic alcohol
Rosefuran oxide	[0.19]	Monoterpenic ether
Terpinen-4-ol	[0.19]	Monoterpenic alcohol
Unknown	0.07	Oxygenated monoterpene
Isogeraniol	1.50	Monoterpenic aldehyde
Unknown	0.08	Unknown
$\alpha$ -Terpineol	0.12	Monoterpenic alcohol
Unknown	0.08	Unknown
<i>trans</i> -Isopiperitenol	0.02	Monoterpenic alcohol
Unknown	0.04	Oxygenated monoterpene
Decanal	0.16	Aliphatic aldehyde
<i>cis</i> -Isopiperitenol	0.03	Monoterpenic alcohol
2,3-Epoxyneral?	0.04	Monoterpenic aldehyde
Nerol	0.17	Monoterpenic alcohol
Citronellol	0.10	Monoterpenic alcohol
Neral	30.42	Monoterpenic aldehyde
( <i>Z</i> )-Isogeraniol	0.02	Monoterpenic alcohol
Piperitone	0.05	Monoterpenic ketone
Geraniol	7.03	Monoterpenic alcohol
Geranial	39.93	Monoterpenic aldehyde
Unknown	0.09	Oxygenated monoterpene
Bornyl acetate	0.01	Monoterpenic ester
Geranyl formate	0.03	Monoterpenic ester
Methyl geranate	0.02	Monoterpenic ester
Unknown	0.03	Unknown
Neric acid	0.05	Monoterpenic acid
$\alpha$ -Cubebene	0.03	Sesquiterpene
Citronellyl acetate	0.05	Monoterpenic ester
Cyclosativene I	0.10	Sesquiterpene
Cyclosativene II	0.10	Sesquiterpene
Neryl acetate	0.03	Monoterpenic ester
$\alpha$ -Ylangene	0.04	Sesquiterpene

$\alpha$ -Copaene	0.04	Sesquiterpene
Geranic acid	0.24	Aliphatic acid
$\beta$ -Bourbonene	0.04	Sesquiterpene
1,5-diepi- $\beta$ -Bourbonene	0.01	Sesquiterpene
Geranyl acetate	3.47	Monoterpenic ester
$\beta$ -Cubebene	0.03	Sesquiterpene
$\beta$ -Elemene	0.13	Sesquiterpene
$\beta$ -Longipinene	0.01	Sesquiterpene
Longifolene	0.02	Sesquiterpene
Unknown	0.01	Unknown
$\beta$ -Caryophyllene	1.87	Sesquiterpene
$\beta$ -Ylangene	0.01	Sesquiterpene
$\beta$ -Copaene	0.04	Sesquiterpene
<i>trans</i> - $\alpha$ -Bergamotene	0.02	Sesquiterpene
6,9-Guaiadiene	0.02	Sesquiterpene
<i>cis</i> - $\beta$ -Bergamotene?	0.01	Sesquiterpene
( <i>E</i> )-Isoeugenol	0.42	Phenylpropanoid
$\alpha$ -Humulene	0.21	Sesquiterpene
<i>cis</i> -Muurolo-4(15),5-diene	0.05	Sesquiterpene
<i>trans</i> -Cadina-1(6),4-diene	0.04	Sesquiterpene
Germacrene D	0.33	Sesquiterpene
$\gamma$ -Amorphene	0.05	Sesquiterpene
epi-Cubebol	0.15	Sesquiterpenic alcohol
(3 <i>Z</i> ,6 <i>E</i> )- $\alpha$ -Farnesene	0.04	Sesquiterpene
$\alpha$ -Muurolole	0.04	Sesquiterpene
Methyl ( <i>E</i> )-isoeugenol	0.07	Phenylpropanoid
$\delta$ -Amorphene	0.03	Sesquiterpene
$\gamma$ -Cadinene	0.97	Sesquiterpene
Cubebol	0.37	Sesquiterpenic alcohol
$\delta$ -Cadinene	0.34	Sesquiterpene
10-epi-Cubebol?	0.05	Sesquiterpenic alcohol
<i>trans</i> -Cadina-1,4-diene	0.02	Sesquiterpene
( <i>E</i> )- $\gamma$ -Bisabolene	0.07	Sesquiterpene
Neryl butyrate	0.06	Monoterpenic ester
$\alpha$ -Cadinene	0.03	Sesquiterpene
( <i>E</i> )- $\alpha$ -Bisabolene	0.01	Sesquiterpene
$\alpha$ -Elemol	0.07	Sesquiterpenic alcohol
Germacrene B	0.05	Sesquiterpene
Geranyl butyrate	0.04	Monoterpenic ester
Caryophyllene oxide isomer	0.09	Sesquiterpenic ether
Caryophyllene oxide	0.48	Sesquiterpenic ether
Humulene epoxide II	0.05	Sesquiterpenic ether
Selin-6-en-4 $\alpha$ -ol isomer	0.02	Sesquiterpenic alcohol
Junenol	0.01	Sesquiterpenic alcohol
1-epi-Cubebol	0.03	Sesquiterpenic alcohol

Cubenol	0.02	Sesquiterpenic alcohol
$\tau$ -Cadinol	0.01	Sesquiterpenic alcohol
$\beta$ -Eudesmol	0.01	Sesquiterpenic alcohol
(2Z,6Z)-Farnesol	0.01	Sesquiterpenic alcohol
(2E,6Z)-Farnesal	0.02	Sesquiterpenic aldehyde
(2E,6E)-Farnesal	0.02	Sesquiterpenic aldehyde
Phytone	0.01	Terpenic ketone
Unknown	0.04	Unknown
Unknown	0.10	Unknown
Unknown	0.09	Unknown
Unknown	0.02	Unknown
Dicitral	0.05	Diterpenic aldehyde
Unknown	0.03	Unknown
Unknown	0.15	Unknown
Unknown	0.01	Unknown
Unknown	0.02	Unknown
Unknown	0.03	Unknown
<b>Consolidated total</b>	<b>99.15</b>	

tr: The compound has been detected below 0.005% of the total signal

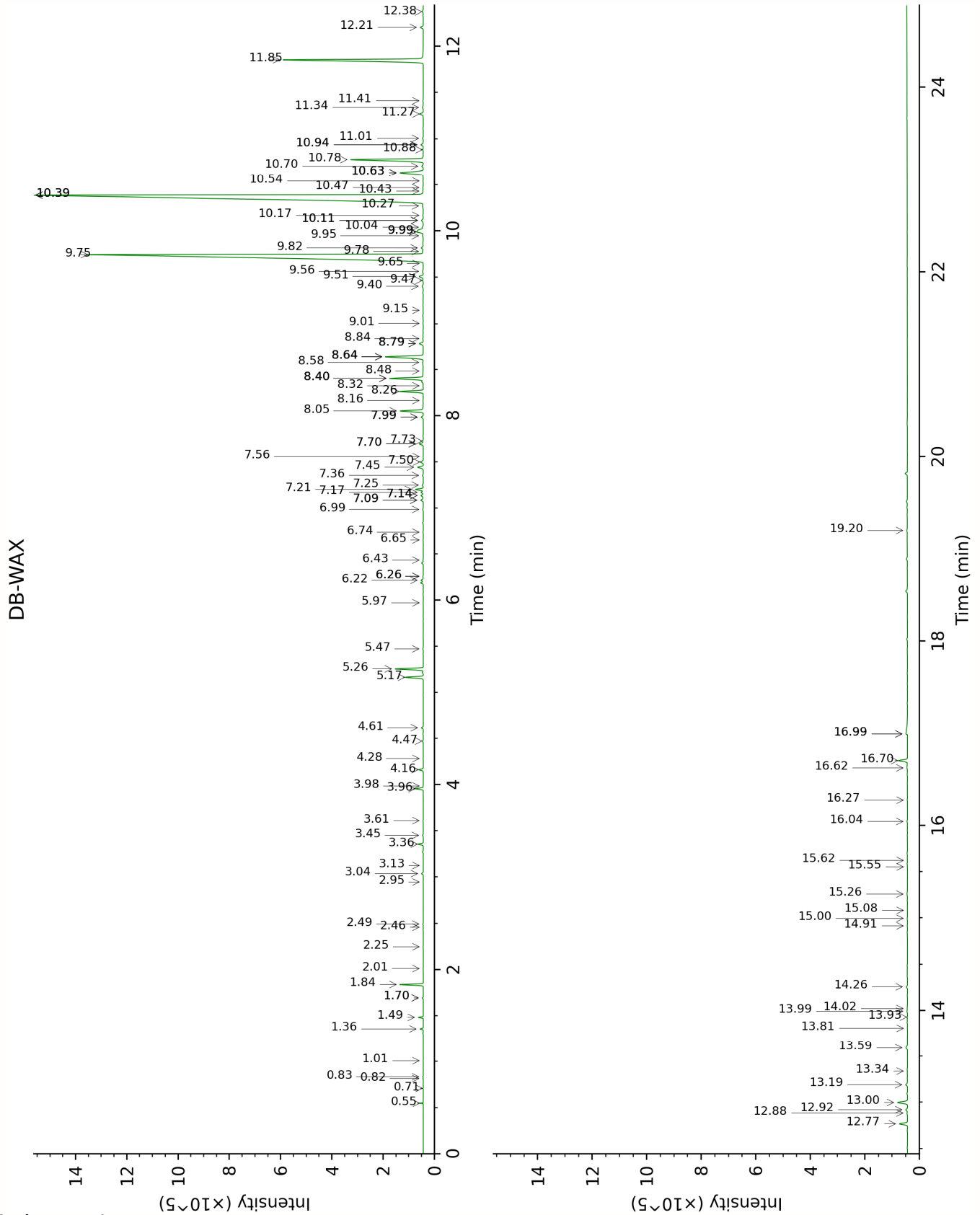
Note: no correction factor was applied

**About "consolidated" data:** The table above presents the breakdown of the sample volatile constituents after applying an algorithm to collapse data acquired from the multi-columns system of PhytoChemia into a single set of consolidated contents. In case of discrepancies between columns, the algorithm is set to prioritize data from the most standard DB-5 column, and smallest values so as to avoid overestimating individual content. This process is semi-automatic. Advanced users are invited to consult the "Full analysis data" table after the chromatograms in this report to access the full untreated data and perform their own calculations if needed.

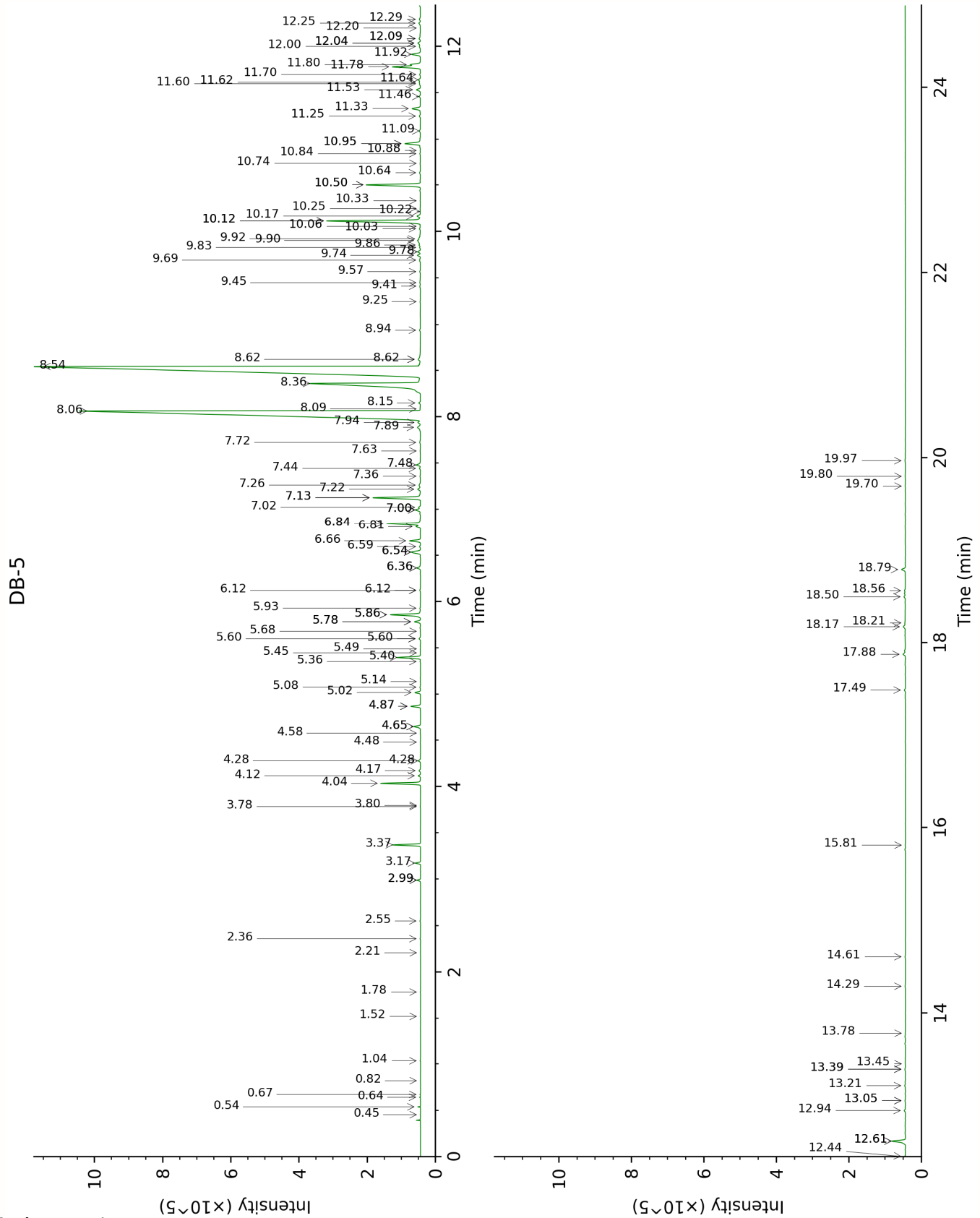
**Unknowns:** Unknown compounds' mass spectral data is presented in the "Full analysis data" table. The occurrence of unknown compounds is to be expected in many samples, and does not denote particular problems unless noted otherwise in the conclusion.

**Bracketed value (xx):** A bracketed percent value indicate that two or more compound percentage could not be solved due to coelution.

This page was intentionally left blank. The following pages present the complete data of the analysis.







FULL ANALYSIS DATA

Isobutyral	Column DB-WAX			Column DB-5		
	0.55	777.8	0.05	0.45	537.6	tr
2-Methyl-3-buten-2-ol	1.70*	1014.8	[0.03]	0.54	606.3	0.03
Isovaleral	0.84	886.3	0.01	0.64	641.0	0.01
2-Methylbutyral	0.82	879.9	0.01	0.67	651.1	0.01
2-Ethylfuran	1.01	920.4	tr	0.82	700.9	tr
Isoamyl alcohol	3.61	1176.6	0.02	1.04	733.0	0.01
Hexanal	2.01	1044.7	0.01	1.52	799.9	tr
Unknown PEGR III [m/z 81, 69 (80), 41 (65), 83 (52), 109 (48), 55 (47)...]	0.71	844.6	0.01	1.78	823.5	0.01
(3Z)-Hexenol	5.97	1347.7	0.01	2.21	858.2	0.01
4-Heptanone	2.49	1090.1	0.02	2.36	870.7	0.02
Unknown CULE I [m/z 69, 41 (57), 81 (57), 80 (18), 79 (18), 67 (17)...]				2.55	886.3	0.01
Tricyclene	1.36	973.2	0.09	2.99*	919.0	[0.10]
(E)-2,4-Dimethyl-2,4-heptadiene	1.70*	1014.8	[0.03]	2.99*	919.0	[0.10]
α-Pinene	1.48	992.1	0.14	3.18	931.1	0.14
Camphene	1.84	1028.5	0.74	3.37	944.0	0.74
Sabinene	2.46	1086.9	0.01	3.78*†	971.2	[0.01]
β-Pinene	2.25	1066.9	0.01	3.80*†	972.0	[0.01]
6-Methyl-5-hepten-2-one	5.26	1295.2	1.11	4.04	987.7	1.12
Myrcene	3.04	1133.2	0.07	4.12	993.0	0.07
6-Methyl-5-hepten-2-ol	7.14*	1432.2	[0.11]	4.17	996.7	0.06
α-Phellandrene	2.95	1126.3	0.01	4.28*	1003.6	[0.09]
Octanal	4.61	1249.4	0.07	4.28*	1003.6	[0.09]
α-Terpinene	3.13	1139.8	0.01	4.48	1016.2	0.01
para-Cymene	4.28	1225.7	0.01	4.58	1022.3	0.01
Limonene	3.36	1157.4	0.20	4.65*	1026.8	[0.23]
1,8-Cineole	3.45	1164.5	0.04	4.65*	1026.8	[0.23]
(Z)-β-Ocimene	3.96	1202.6	0.29	4.86*	1040.4	[0.29]
Benzeneacetaldehyde	9.00	1573.1	0.02	4.86*	1040.4	[0.29]
(E)-β-Ocimene	4.16	1217.2	0.17	5.02	1050.2	0.18
2,6-Dimethyl-5-heptenal (melonal)	5.47	1312.1	0.03	5.08	1053.7	0.03
γ-Terpinene	3.98	1204.6	0.01	5.14	1057.5	0.01
cis-Linalool oxide (fur.)	6.74	1402.3	0.02	5.36	1071.0	0.02

4-Nonanone	5.17	1288.7	0.71	5.40	1073.8	0.70
Octanol	8.40*	1526.9	[1.54]	5.45	1076.9	0.01
Camphenilone	6.65	1396.2	0.01	5.49	1079.6	0.01
<i>trans</i> -Linalool oxide (fur.)	7.09*	1428.4	[0.13]	5.60*	1086.4	[0.06]
Terpinolene	4.47	1239.1	0.04	5.60*	1086.4	[0.06]
4-Nonanol				5.68	1091.4	0.01
Perillene	6.26*	1368.1	[0.02]	5.78*	1097.8	[0.21]
Rosefuran	6.26*	1368.1	[0.02]	5.78*	1097.8	[0.21]
<i>cis</i> -Chrysanthemal?	6.22†	1365.1	0.11	5.86*	1102.6	[1.04]
Linalool	8.26	1516.0	0.97	5.86*	1102.6	[1.04]
( <i>Z</i> )-6-Methyl-3,5-heptadien-2-one	8.40*	1526.9	[1.54]	5.93	1107.0	0.03
<i>trans-para</i> -Mentha-2,8-dien-1-ol	9.15	1584.0	0.01	6.12*	1119.3	[0.03]
Unknown CYFL II [m/z 81, 79 (19), 41 (12), 92 (8), 77 (8)...]	6.43	1380.6	0.02	6.12*	1119.3	[0.03]
Unknown CYFL IV [m/z 95, 67 (86), 41 (68), 82 (64), 123 (62)...]	7.73	1475.6	0.03	6.36*	1134.7	[0.15]
Unknown CYFL III [m/z 81, 70 (98), 67 (63), 82 (53), 41 (46), 69 (46), 109 (43)...]	7.09*	1428.4	[0.13]	6.36*	1134.7	[0.15]
<i>trans</i> -Chrysanthemal	7.44	1454.8	0.27	6.54*	1145.6	[0.41]
<i>exo</i> -Isocitral	7.70*	1473.4	[0.19]	6.54*	1145.6	[0.41]
<i>trans</i> -Chrysanthemol	9.78	1634.5	0.04	6.59	1149.4	0.04
Citronellal	7.20	1437.0	0.34	6.66	1153.3	0.36
Borneol	9.99*†	1651.6	[0.36]	6.81	1163.2	0.14
Isoneral	8.05	1499.8	1.05	6.84*	1165.3	[1.10]
$\alpha$ -Phellandren-8-ol	10.39*	1683.4	[39.74]	6.84*	1165.3	[1.10]
Rosefuran oxide	8.79*	1556.4	[0.20]	7.00*	1175.0	[0.19]
Terpinen-4-ol	8.79*	1556.4	[0.20]	7.00*	1175.0	[0.19]
Unknown CYFL V [m/z 84, 83 (74), 137 (56), 41 (47), 93 (43), 108 (40)... 152 (2)]	9.82	1637.6	0.11	7.02	1176.8	0.07
Isogeranial	8.40*	1526.9	[1.54]	7.13*	1183.4	[1.58]
Unknown CYFL XIV [m/z 69, 41 (65), 109 (36), 67 (16), 84 (11), 43 (10), 55 (9)...]				7.13*	1183.4	[1.58]
$\alpha$ -Terpineol	9.99*†	1651.6	[0.36]	7.22	1189.3	0.12

Unknown DRMO III [m/z 43, 81 (47), 67 (45), 69 944), 41 (42), 59 (40), 55 (39)...]	9.40	1604.3	0.07	7.26	1192.1	0.08
<i>trans</i> -Isopiperitenol	10.63*	1703.6	[1.38]	7.36	1198.2	0.02
Unknown CYFL VI [m/z 84, 41 (83), 83 (79), 91 (76), 93 (67), 119 (64), 137 (63), 109 (54), 108 (54)... 152 (4)]	10.39*	1683.4	[39.74]	7.44	1203.5	0.04
Decanal	7.50	1458.9	0.13	7.48	1206.0	0.16
<i>cis</i> -Isopiperitenol	10.54	1695.8	0.02	7.63	1216.1	0.03
2,3-Epoxyneral?				7.72	1222.2	0.04
Nerol	11.27	1757.4	0.17	7.89	1233.1	0.17
Citronellol	10.94*	1729.3	[0.11]	7.94	1236.6	0.10
Neral	9.75	1631.8	30.30	8.06	1244.9	30.42
( <i>Z</i> )-Isogeraniol	11.41	1769.4	0.02	8.08	1246.3	0.02
Piperitone	10.11*	1661.4	[0.11]	8.15	1250.6	0.05
Geraniol	11.85	1807.2	7.29	8.36	1264.7	7.03
Geranial	10.39*	1683.4	[39.74]	8.54	1276.9	39.93
Unknown CYFL VII [m/z 43, 69 (77), 41 (70), 109 (54)... 152 (6)]	13.19	1926.4	0.09	8.62*	1282.1	[0.15]
Bornyl acetate	8.48	1532.9	0.01	8.62*	1282.1	[0.15]
Geranyl formate	10.11*	1661.4	[0.11]	8.94	1303.5	0.03
Methyl geranate	9.95	1648.1	0.05	9.25	1325.0	0.02
Unknown CYFL VIII [m/z 82, 59 (44), 41 (43), 95 (31), 43 (29), 81 (24)...]	12.88	1898.1	0.03	9.41	1336.8	0.03
Neric acid	16.62	2261.5	0.06	9.45	1339.4	0.05
$\alpha$ -Cubebene	6.99	1421.0	0.03	9.57	1347.7	0.03
Citronellyl acetate	9.65	1624.0	0.01	9.69	1356.4	0.05
Cyclosativene I	7.14*	1432.2	[0.11]	9.74	1360.1	0.10
Cyclosativene II	7.17	1434.7	0.10	9.78	1362.7	0.10
Neryl acetate	10.43	1686.9	0.02	9.83	1366.0	0.03
$\alpha$ -Ylangene	7.25	1440.5	0.05	9.86	1367.8	0.04
$\alpha$ -Copaene	7.36	1448.2	0.04	9.90*†	1371.4	[0.17]
Geranic acid	16.99*	2299.9	[0.25]	9.92*†	1372.5	[0.11]
$\beta$ -Bourbonene	7.70*	1473.4	[0.19]	10.03	1380.2	0.04
1,5-diepi- $\beta$ -Bourbonene	7.56	1463.2	0.01	10.06	1382.0	0.01
Geranyl acetate	10.78	1715.7	3.47	10.12*	1386.2	[3.50]

β-Cubebene	7.99*	1494.7	[0.10]	10.12*	1386.2	[3.50]
β-Elemene	8.64*	1544.9	[1.95]	10.17	1389.8	0.13
β-Longipinene	7.99*	1494.7	[0.10]	10.22	1393.3	0.01
Longifolene	8.16	1508.4	0.02	10.25	1395.4	0.02
Unknown MEOF IV [m/z 150, 91 (93), 107 (74), 135 (68), 79 (57), 77 (44)...]	13.34	1939.9	0.01	10.33	1401.3	0.01
β-Caryophyllene	8.64*	1544.9	[1.95]	10.50*	1413.9	[1.88]
β-Ylangene	8.32	1520.6	0.01	10.50*	1413.9	[1.88]
β-Copaene	8.58	1540.2	0.04	10.64	1424.1	0.04
<i>trans</i> -α-Bergamotene	8.64*	1544.9	[1.95]	10.74	1431.6	0.02
6,9-Guaiadiene	8.84	1560.5	0.03	10.84	1439.3	0.02
<i>cis</i> -β-Bergamotene?				10.88	1442.0	0.01
( <i>E</i> )-Isoeugenol	16.70	2269.7	0.42	10.95*	1447.4	[0.59]
α-Humulene	9.51	1612.7	0.21	10.95*	1447.4	[0.59]
<i>cis</i> -Muurolo-4(15),5- diene	9.56	1617.2	0.06	11.09	1457.6	0.05
<i>trans</i> -Cadina-1(6),4- diene	9.47	1609.3	0.04	11.25	1469.5	0.04
Germacrene D	9.99*†	1651.6	[0.36]	11.33	1475.5	0.33
γ-Amorphene	10.04	1655.5	0.04	11.46	1485.1	0.05
epi-Cubebol	12.20	1838.1	0.14	11.53	1490.6	0.15
(3 <i>Z</i> ,6 <i>E</i> )-α-Farnesene	10.47	1690.0	0.03	11.60	1495.4	0.04
α-Muurolene	10.27	1674.0	0.06	11.62	1496.7	0.04
Methyl ( <i>E</i> )-isoeugenol	15.26	2122.9	0.05	11.64	1498.6	0.07
δ-Amorphene	10.17	1665.8	0.03	11.70	1502.8	0.03
γ-Cadinene	10.63*	1703.6	[1.38]	11.78*†	1509.2	[1.02]
Cubebol	12.77	1887.7	0.37	11.80*†	1511.1	[0.32]
δ-Cadinene	10.63*	1703.6	[1.38]	11.92	1519.8	0.34
10-epi-Cubebol?	13.99	2000.4	0.03	12.00	1526.5	0.05
<i>trans</i> -Cadina-1,4- diene	10.88	1724.7	0.02	12.04*	1529.2	[0.12]
( <i>E</i> )-γ-Bisabolene	10.70	1709.7	0.07	12.04*	1529.2	[0.12]
Neryl butyrate				12.08*	1533.1	[0.09]
α-Cadinene	11.01	1735.2	0.03	12.08*	1533.1	[0.09]
( <i>E</i> )-α-Bisabolene	10.94*	1729.3	[0.11]	12.20	1542.0	0.01
α-Elemol	14.26	2025.7	0.06	12.25	1546.1	0.07
Germacrene B	11.34	1763.3	0.04	12.29	1549.3	0.05
Geranyl butyrate	12.38	1853.2	0.06	12.44	1561.1	0.04
Caryophyllene oxide isomer	12.92	1901.4	0.09	12.61*	1574.3	[0.54]
Caryophyllene oxide	13.00	1908.6	0.48	12.61*	1574.3	[0.54]
Humulene epoxide II	13.59	1963.3	0.11	12.94	1600.2	0.05
Selin-6-en-4α-ol	15.00	2096.7	0.02	13.05*	1608.7	[0.03]

isomer						
Junenol	13.81	1983.1	0.01	13.05*	1608.7	[0.03]
1-epi-Cubenol	14.02	2003.2	0.03	13.21	1622.1	0.03
Cubenol	13.93	1994.3	0.02	13.39*	1636.7	[0.03]
τ-Cadinol	15.08	2105.3	0.01	13.39*	1636.7	[0.03]
β-Eudesmol	15.62	2159.2	0.01	13.44	1641.5	0.01
(2Z,6Z)-Farnesol	16.27	2225.4	0.02	13.78	1669.4	0.01
(2E,6Z)-Farnesal	15.55	2152.2	0.01	14.29	1711.5	0.02
(2E,6E)-Farnesal	16.04	2201.5	0.03	14.61	1739.1	0.02
Phytone	14.92	2088.7	0.02	15.81	1845.2	0.01
Unknown LICU V [m/z 41, 69 (95), 109 (41), 95 (39), 55 (36), 121 (36)...]				17.49	2002.0	0.04
Unknown LICU VII [m/z 69, 41 (94), 81 (42), 109 (39), 107 (33), 43 (31)...]				17.88	2040.1	0.10
Unknown CYFL IX [m/z 93, 69 (95), 135 (76), 107 (53), 41 (53), 109 (50)... 235 (10)...]				18.17	2069.6	0.09
Unknown LICU IV [m/z 69, 41 (73), 55 (46), 95 (40), 109 (39), 91 (39)...]				18.21	2073.7	0.02
Dicitral	16.99*	2299.9	[0.25]	18.50	2101.6	0.05
Unknown DRMO VI [m/z 69, 41 (37), 81 (23), 95 (19), 109 (18)...]	19.20	2544.7	0.03	18.56	2108.3	0.03
Unknown LICU II [m/z 69, 41 (38), 151 (36), 123 (34), 82 (24), 43 (23), 109 (21)...]				18.79	2131.8	0.15
Unknown CYFL X [m/z 94, 43 (56), 123 (55), 69 (53), 95 (42), 79 (39)...]				19.70	2226.5	0.01
Unknown CYFL XI [m/z 93, 69 (79), 43 (70), 137 (53), 41 (41), 119 (37)... 289 (33)...]				19.80	2237.9	0.02
Unknown CYFL XII [m/z 123, 94 (100), 43				19.97	2256.1	0.03

(86), 69 (75), 95 (47), 41 (47), 93 (45)...						
Total reported		98.09%			99.00%	

\*: Two or more compounds are coeluting on this column

[xx]: Duplicate percentage due to coelutions, only the first one is taken into account in the consolidated total

†: Peaks apexes were resolved, but peaks overlapped and were summed for analysis

tr: The compound has been detected below 0.005% of total signal.

Note: no correction factor was applied

R.T.: Retention time (minutes)

R.I.: Retention index